

## Contents

1. Description
2. Schematic
3. EVM Board and Efficiency
4. PCB Layout
5. Bill of Materials

Application Note

AP5727 Application Information and Demo Board User Guide

**1. Description**

The AP5727(Boost) evaluation modules (EVM) provide a means for the user to evaluate quickly the functionality and electrical performance of the AP5727 device. All inputs and outputs are brought out to test points for control and monitoring. All passive components are included on the EVM for device operation. The input pin should be connected to an external supply; the output should be connected to a load.

**2. EVM Schematic**

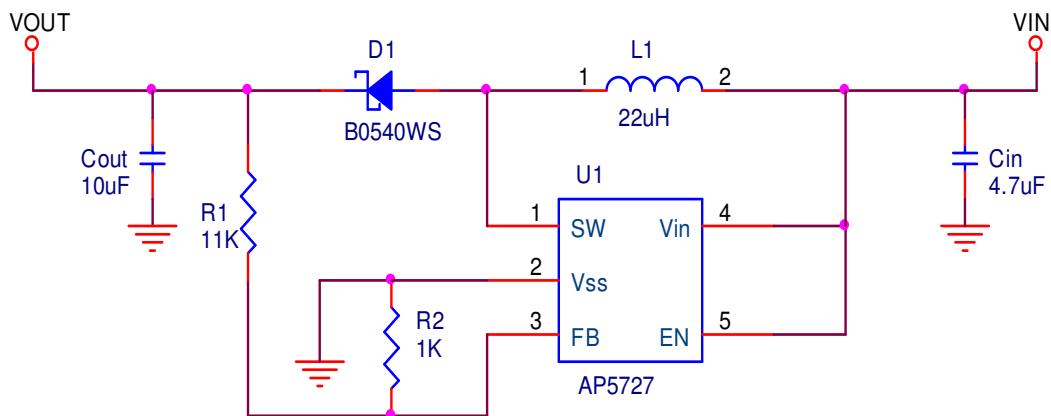
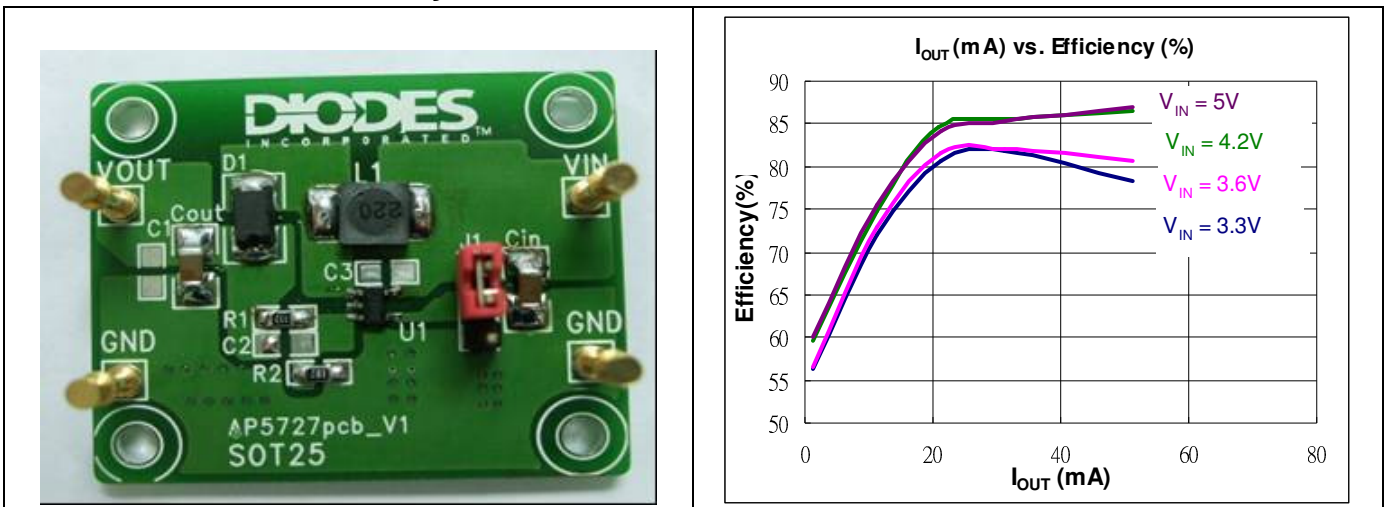


Figure 1. AP5727 schematic

**3. EVM board and Efficiency**

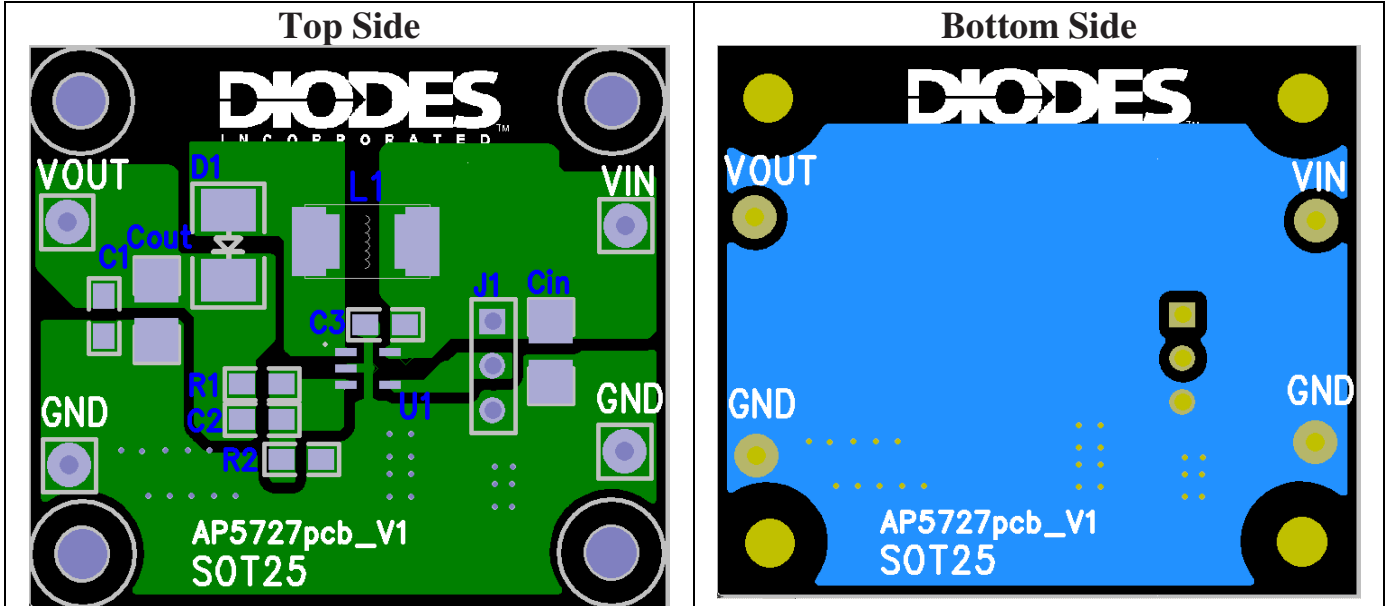


This application note contains new product information. Diodes, Inc. reserves the right to modify the product specification without notice. No liability is assumed as a result of the use of this product. No rights under any patent accompany the sale of the product.

## Application Note

### AP5727 Application Information and Demo Board User Guide

#### 4. Board Layout



#### 5. Bill of Materials

Component Location	Quantity	Value	Source	Part No.	Size
Cin	1	4.7uF	TAIYO YUDEN	LMK316 B7 475KL-T	
Cout	1	10uF	TAIYO YUDEN	LMK316 F 106ZL-T	
L1	1	22uH/0.88A	Würth Electronics	744042220	4.8 X 4.8 X 1.6
		22uH/0.56A	GOTREND	GLP3810PH220N	3.8 X 3.8 X 1.05
		22uH/0.51A	TAIYO YUDEN	NR4012	4.0 X 4.0 X 1.25
R2	1	1k $\Omega$ (1%)	YAGEO		R0805
R1	1	11k $\Omega$ (1%)	YAGEO		R0805
D1	1	40V/0.5A	ZETEX	ZLLS400	SOD323
		40V/0.5A	DIODES	B0540WS	SOD323
		40V/0.25A	DIODES	SDM20U40	SOD523
U1	1	AP5727_SOT26	Diodes		SOT26
PCB	1			TDB0045	

This application note contains new product information. Diodes, Inc. reserves the right to modify the product specification without notice. No liability is assumed as a result of the use of this product. No rights under any patent accompany the sale of the product.