

# PI5USB30216CXUA Demo Board Rev.B User Manual

Measurement by: NA  
Report by: Lee, Justin

## Table of Contents

<b>1</b>	<b>Introduction .....</b>	<b>2</b>
<b>2</b>	<b>Overview .....</b>	<b>2</b>
<b>3</b>	<b>Quick Start.....</b>	<b>4</b>
<b>3.1</b>	<b>Source(DFP) Mode .....</b>	<b>4</b>
<b>3.2</b>	<b>Battery-powered Sink(UFP) Mode.....</b>	<b>5</b>
<b>3.3</b>	<b>Bus-powered Sink(UFP) Mode .....</b>	<b>6</b>
<b>3.4</b>	<b>Try.SNK DRP Mode .....</b>	<b>7</b>
<b>4</b>	<b>Circuit Description.....</b>	<b>9</b>
<b>4.1</b>	<b>DIP Switch Setting.....</b>	<b>9</b>
<b>4.2</b>	<b>Mode Selection, I2C Address and I2C Bus .....</b>	<b>9</b>
<b>4.3</b>	<b>VBUS Power Supply.....</b>	<b>9</b>
<b>4.4</b>	<b>Power .....</b>	<b>10</b>
<b>4.5</b>	<b>Disable/Low Power State.....</b>	<b>10</b>
<b>5</b>	<b>Appendix A: Demo Board Schematic.....</b>	<b>12</b>
<b>6</b>	<b>Appendix B: Demo Board Picture .....</b>	<b>13</b>

ORIGINATE DATE 16 May, 2017	EDIT DATE 16 May, 2017	DOCUMENT-REV 1.0	PAGE Page 1 of 14
--------------------------------	---------------------------	------------------	----------------------

## 1 Introduction

PI5USB30216C provides a cost-effective solution for USB 2.0 Type-C connector applications. PI5USB30216C detects the plug-in orientation of the cable at a Type-C connector. It supports host mode, device mode and dual role mode ports with automatic configuration based on the voltage levels detected on CC pins. It is a fully-integrated solution with ultra-low power dissipation. PI5USB30216C enters power-saving mode when ENB pin is pulled up to VDD through an internal resistor.

PI5USB30216C supports both pin and I2C control base on ADDR pin setting. It allows the system choose between pin control and I2C control mode. In pin control mode, the PORT input pin determines the port setting in which host, device or dual-role port can be selected. In host mode, the system can monitor ID pin to know the connector status while default current mode is set. Systems running in device mode can monitor system VBUS for connector status as well as OUT1 and OUT2 pins for host's charging profile capability. Enabling I2C control mode allows higher flexibility for port control and communications through registers read/write in PI5USB30216C. There is also flexibility to support Default, 1.5A and 3A current modes. An interrupt signal for indicating changes with the I2C registers is sent to the master to notify the system any change in the Type-C connector while in parallel the system can still monitor ID pin.

This user manual describes the components and the usage of PI5USB30216C Demo Board Rev.B.

## 2 Overview

Figure 1 is the block diagram of Diodes PI5USB30216C demo board and figure 2 shows the demo board layout. A USB-C cable can be connected between the USB-C receptacle connector (J1) on PI5USB30216C demo board and another USB-C device. A USB-C to USB-A cable can be connected between J1 and a USB host, such as PC. A USB-C to USB-A receptacle adapter can be connected between J1 and a USB device, such as USB flash drive. One USB3 micro-AB receptacle (J2) is used to connect mobile phones/notebook/tablet/PC to transmit USB2 data to/from J1.

Slide switch at reference SW1 is used to set control mode (GPIO/I2C) and operating mode (Source/Sink/DRP) of PI5USB30216C and LED indicator to SDA/SCL/INTB/ID pins of PI5USB30216C. The processor can connect to SDA/SCL/INTB/ID pins through Test Header J3.

+5V can be employed to the demo board via 5VPW header pin or mini-B receptacle (J4).

VBUS of Type-C connector can be source from on-board VBUS switch via JP1.

ORIGINATE DATE 16 May, 2017	EDIT DATE 16 May, 2017	DOCUMENT-REV 1.0	PAGE Page 2 of 14
--------------------------------	---------------------------	------------------	----------------------

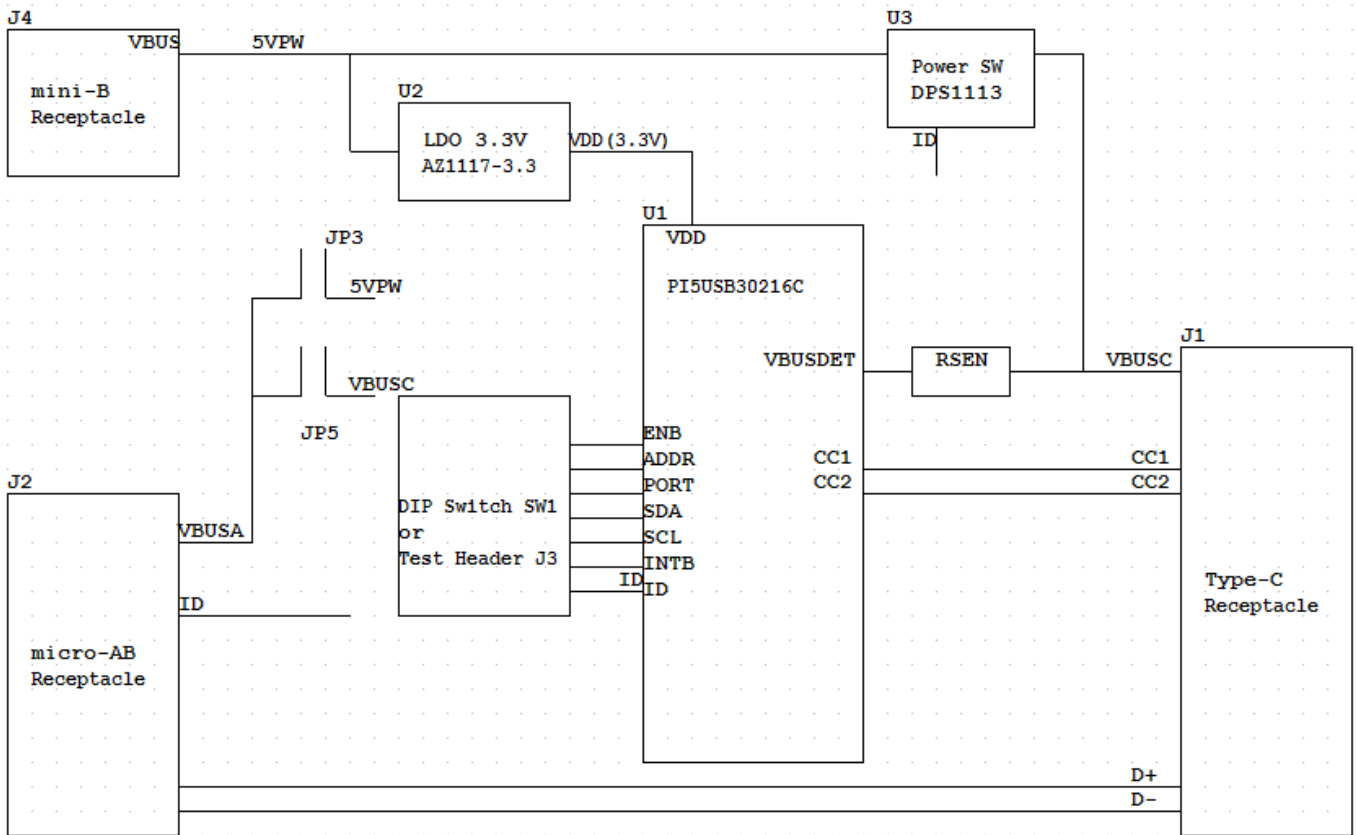


Figure 1: Simplified Block Diagram of PI5USB30216C Demo Board Rev.B

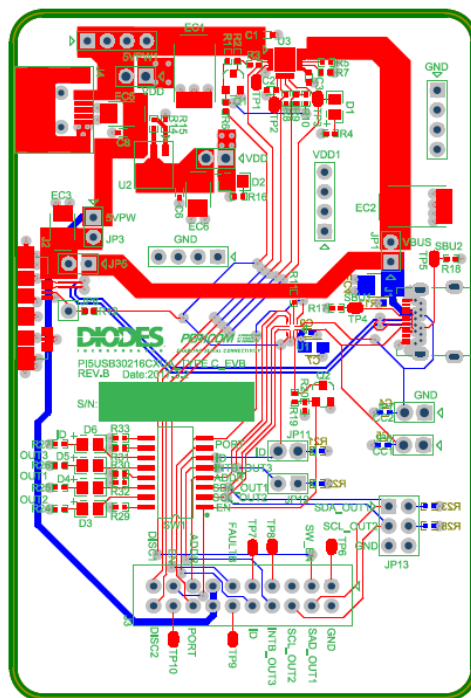


Figure 2: Layout of PI5USB30216C Demo Board Rev.B

ORIGINATE DATE 16 May, 2017	EDIT DATE 16 May, 2017	DOCUMENT-REV 1.0	PAGE Page 3 of 14
--------------------------------	---------------------------	------------------	----------------------

### 3 Quick Start

This section provides different configuration examples to start-up PI5USB30216C demo board rev.B in Source, Sink or DRP mode.

#### 3.1 Source (DFP) Mode

To start-up the PI5USB30216C demo board rev.B in pin control DFP mode, complete the following steps:

1. Configure pin headers and DIP switches SW1 as shown in Table 1.
2. Power-up PI5USB30216C demo board by connecting J2 to a USB host using Type-A to micro-B cable. D2 should light up indicating the board has power.
3. Connect PI5USB30216C demo board to a Type-C Sink(UFP) using a Type-C cable. D6 should light up indicating ID pin is pulled low and 5V VBUS is provided by the demo board.

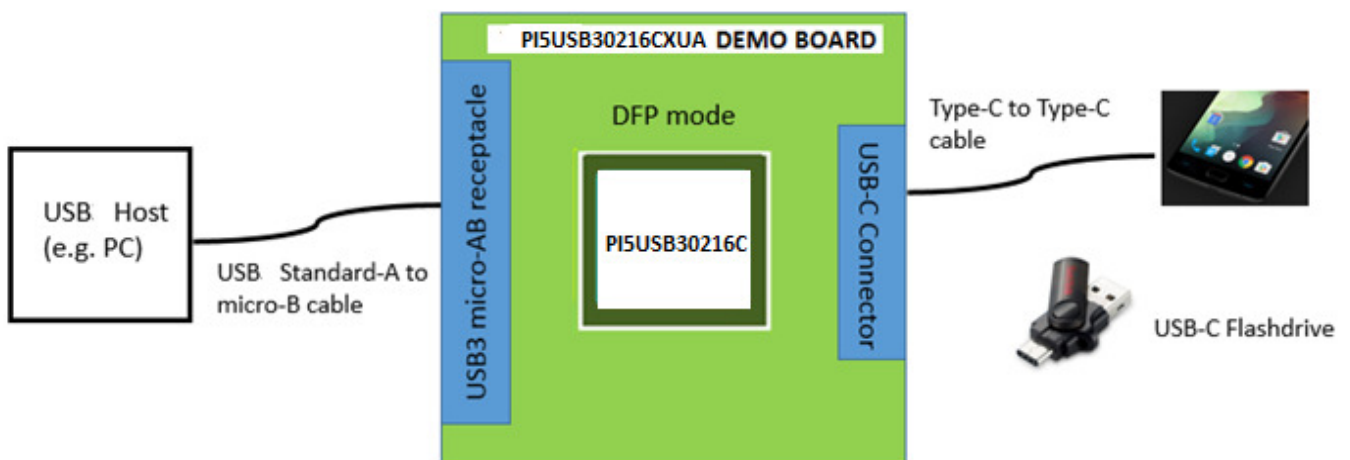


Figure 3: PI5USB30216C Demo Board DFP mode illustration.

Header pin/ Switch	Pin name/ Function	Setting
SW1.1	ENB = L	ON
SW1.2	SCL/OUT2 LED indicator	OFF
SW1.3	SDA/OUT1 LED indicator	OFF
SW1.4	ADDR	OFF
SW1.5	INTB/OUT3 LED indicator	ON
SW1.6	ID LED indicator	ON
SW1.7	PORT = H	ON
SW1.8	PORT = L	OFF
JP1	Connect output of VBUS switch to VBUSC	ON
JP3	Demo board power by VBUSA	ON
JP5	Connect VBUSC to VBUSA	OFF
JP9	Connect 5VPW to VDD	OFF
JP10	Enable 3.3V VDD	ON

Table 1: PI5USB30216C Demo Board Rev.B DFP mode configuration.

ORIGINATE DATE 16 May, 2017	EDIT DATE 16 May, 2017	DOCUMENT-REV 1.0	PAGE Page 4 of 14
--------------------------------	---------------------------	------------------	----------------------

### 3.2 Battery-powered Sink (UFP) Mode

To start-up the PI5USB30216C demo board rev.B in pin control UFP mode, complete the following steps:

1. Configure pin headers and DIP switches SW1 as shown in Table 2.
2. Connect J2 to a USB device using micro-A to Type-A receptacle.
3. Power up PI5USB30216C demo board by connecting J4 to a USB host using Type-A to mini-B cable (or connect +5V to 5VPW pin header). D2 should light up indicating the board has power.
4. Connect PI5USB30216C demo board to a Type-C Source(DFP) using a Type-C cable. 5V VBUS should be provided by the Type-C Host/Source/DFP. D3 and D4 might light up depends on the DFP's Type-C current mode setting.

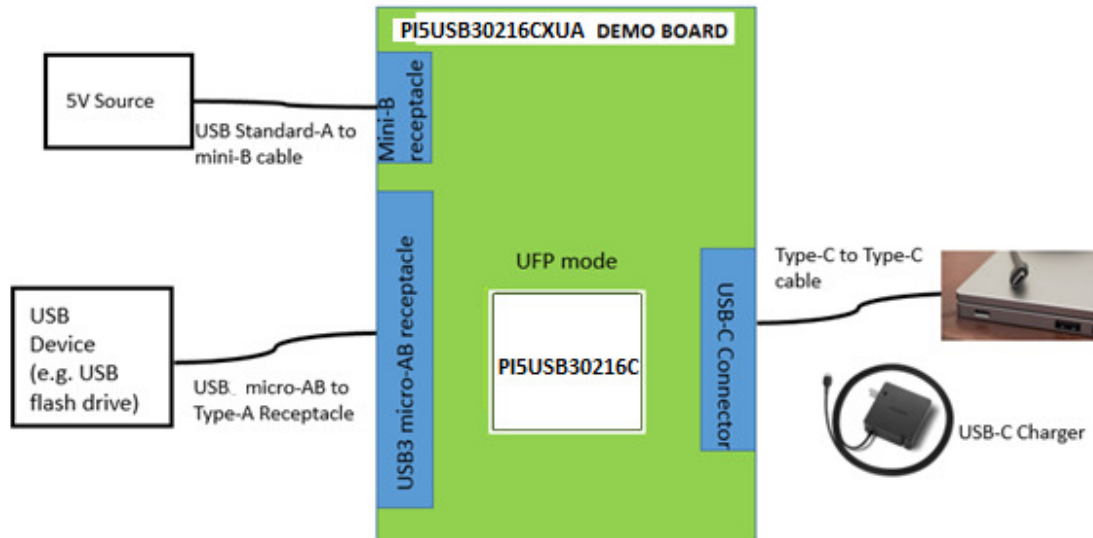


Figure 4: PI5USB30216C Demo Board battery-powered UFP mode illustration.

Header pin/ Switch	Pin name/ Function	Setting
SW1.1	ENB = L	ON
SW1.2	SCL/OUT2 LED indicator	ON
SW1.3	SDA/OUT1 LED indicator	ON
SW1.4	ADDR	OFF
SW1.5	INTB/OUT3 LED indicator	OFF
SW1.6	ID LED indicator	OFF
SW1.7	PORT = H	OFF
SW1.8	PORT = L	ON
JP1	Enable On-board VBUS switch	OFF
JP3	Demo board power by VBUSA	OFF
JP5	Connect VBUSC to VBUSA	ON
JP9	Connect 5VPW to VDD	OFF
JP10	Enable 3.3V VDD	ON

Table 2: PI5USB30216C Demo Board Rev.B battery-powered UFP mode configuration.

### 3.3 Bus-powered Sink(UFP) Mode

To start-up the PI5USB30216C demo board rev.B in pin control VBUS-powered UFP mode, complete the following steps:

1. Configure pin headers and DIP switches SW1 as shown in Table 3.
2. Connect J2 to a USB device using micro-A to Type-A receptacle.
3. Connect PI5USB30216C demo board to a Type-C Source(DFP) using a Type-C cable. 5V VBUS should be provided by the Type-C Host/Source/DFP. D2, D3 and D4 might light up depends on the DFP's Type-C current mode setting.

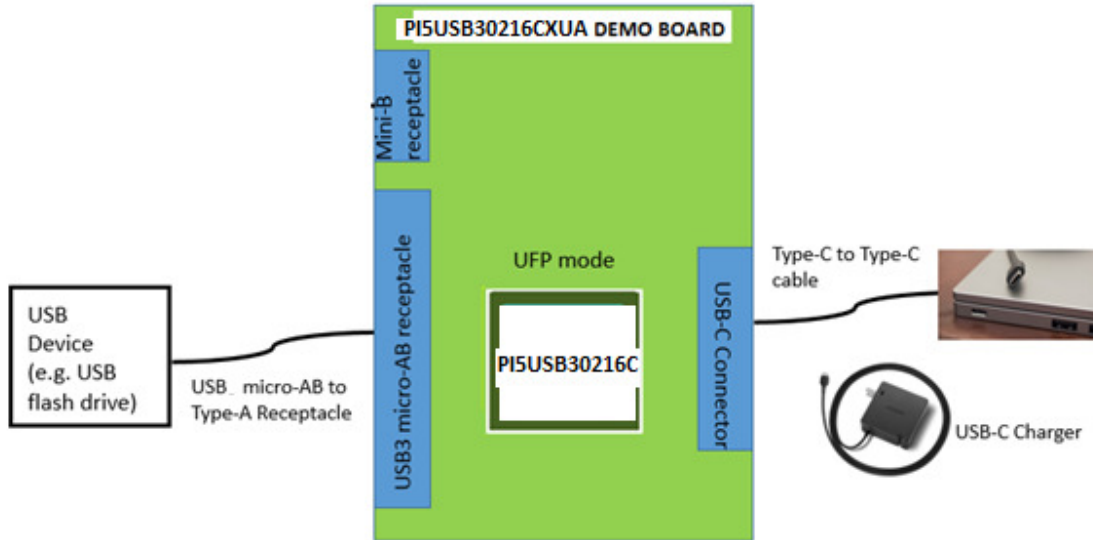


Figure 5: PI5USB30216C Demo Board VBUS-powered UFP mode illustration.

Header pin/ Switch	Pin name/ Function	Setting
SW1.1	ENB = L	ON
SW1.2	SCL/OUT2 LED indicator	ON
SW1.3	SDA/OUT1 LED indicator	ON
SW1.4	ADDR	OFF
SW1.5	INTB/OUT3 LED indicator	OFF
SW1.6	ID LED indicator	OFF
SW1.7	PORT = H	OFF
SW1.8	PORT = L	ON
JP1	Enable On-board VBUS switch	OFF
JP3	Demo board power by VBUSA	ON
JP5	Connect VBUSC to VBUSA	ON
JP9	Connect 5VPW to VDD	OFF
JP10	Enable 3.3V VDD	ON

Table 3: PI5USB30216C Demo Board Rev.B VBUS-powered UFP mode configuration.

ORIGINATE DATE 16 May, 2017	EDIT DATE 16 May, 2017	DOCUMENT-REV 1.0	PAGE Page 6 of 14
--------------------------------	---------------------------	------------------	----------------------

### 3.4 Try.SNK DRP Mode

To start-up the PI5USB30216C demo board rev.B in pin control Try.SNK DRP mode, complete the following steps:

1. Configure pin headers and DIP switches SW1 as shown in Table 3 in the next page.
2. Power up PI5UB30216C demo board by connecting J4 to a USB host using Type-A to mini-B cable. D2 should light up indicating the board has power.
3. Connect PI5USB30216C demo board to a Type-C Sink(UFP) using a Type-C cable. D6 should light up indicating ID pin is pulled low and 5V VBUS is provided by the demo board.
4. Connect PI5USB30216C demo board to a Type-C Source(DFP) using a Type-C cable. 5V VBUS should be provided by the Type-C Host/Source/DFP. D3 and D4 might light up depends on the DFP's Type-C current mode setting
5. Connect PI5USB30216C demo board to a Type-C DRP using a Type-C cable. PI5USB30216C should connect as Sink/UFP due to Try.SNK feature. 5V VBUS should be provided by the port partner. D3 and D4 might light up depends on port partner's Type-C current mode setting.
6. Connect PI5USB30216C demo board to a Type-C Try.SNK DRP using a Type-C cable. PI5USB30216C may result in either DFP or UFP mode. The result is random.
  - a. When connect as a Source/DFP/Host, D6 should light up indicating ID pin is pulled low and 5V VBUS is provided by the demo board.
  - b. When connect as a Sink/UFP/Device. 5V VBUS should be provided by the port partner. D3 and D4 might light up depends on port partner's Type-C current mode setting.

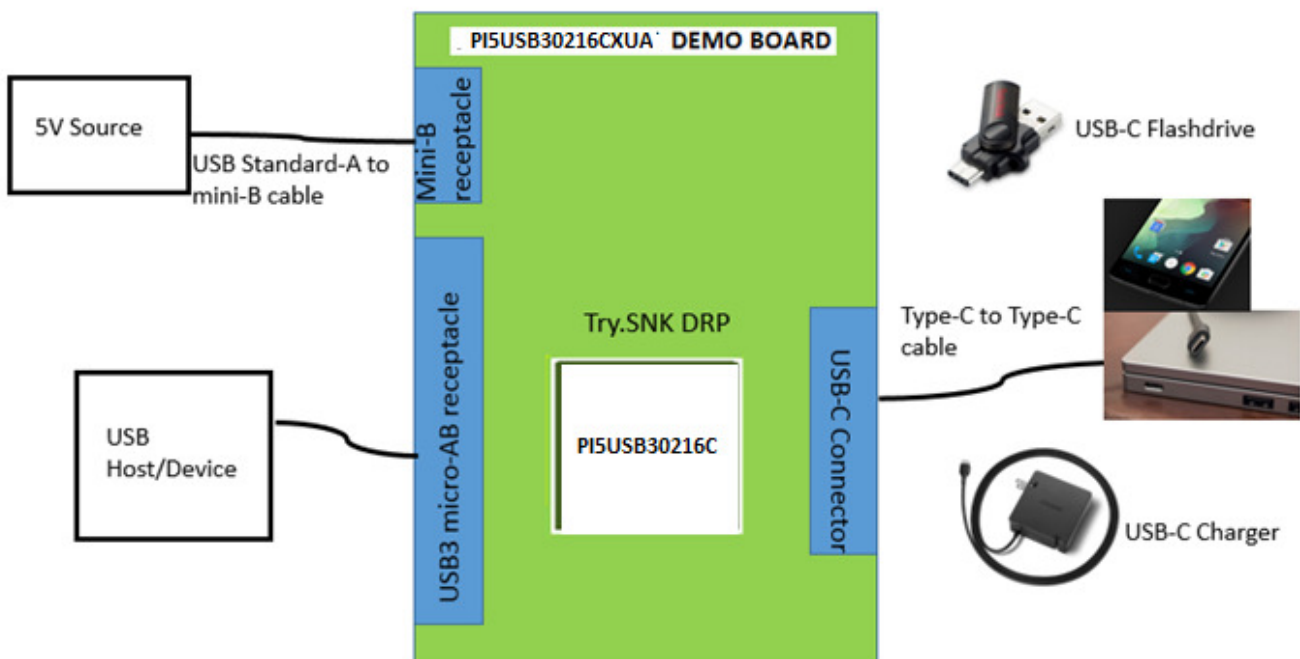


Figure 6: PI5USB30216C Demo Board Try.SNK DRP mode illustration.

ORIGINATE DATE 16 May, 2017	EDIT DATE 16 May, 2017	DOCUMENT-REV 1.0	PAGE Page 7 of 14
--------------------------------	---------------------------	------------------	----------------------

Header pin/ Switch	Pin name/ Function	Setting
SW1.1	ENB = L	ON
SW1.2	SCL/OUT2 LED indicator	ON
SW1.3	SDA/OUT1 LED indicator	ON
SW1.4	ADDR	OFF
SW1.5	INTB/OUT3 LED indicator	ON
SW1.6	ID LED indicator	ON
SW1.7	PORT = H	OFF
SW1.8	PORT = L	OFF
JP1	Enable On-board VBUS switch	ON
JP3	Demo board power by VBUSA	OFF
JP5	Connect VBUSC to VBUSA	OFF
JP9	Connect 5VPW to VDD	OFF
JP10	Enable 3.3V VDD	ON

Table 4: PI5USB30216C Demo Board Rev.B Try.SNK DRP mode (pin control mode) configuration.



## 4 Circuit Description

### 4.1 DIP Switch Setting

The DIP switch (SW1) is used to configure PI5USB30216C in different mode.

Header pin/ Switch	Pin name/ Function	Description
SW1.1	ENB	ENB = Low if SW1.1 is ON. ENB = High if SW1.1 is OFF.
SW1.2	SCL/OUT2 LED indicator	For pin control mode: OUT2 is connected to LED if SW1.2 is ON  For I2C mode: SW1.2 shall be OFF.
SW1.3	SDA/OUT1 LED indicator	For pin control mode: OUT1 is connected to LED if SW1.3 is ON  For I2C mode: SW1.2 shall be OFF.
SW1.4	ADDR	For pin control mode: SW1.4 is OFF.  For I2C mode: SW1.4 is ON. I2C mode; 0x1D (Default) I2C mode; 0x3D (Remove R30 and solder R28)
SW1.5	INTB/OUT3 LED indicator	OUT3 is connected to LED if SW1.5 is ON
SW1.6	ID LED indicator	ID is connected to LED if SW1.6 is ON
SW1.7	PORT = H	PORT = Open if SW1.7 is OFF PORT = High if SW1.7 is ON
SW1.8	PORT = L	PORT = Open if SW1.8 is OFF PORT = Low if SW1.8 is ON

**Table 5: DIP Switch SW1 settings**

### 4.2 Mode Selection, I2C Address and I2C Bus

PI5USB30216C can be controlled via either GPIO or I2C mode. The control mode and I2C address is configured via ADDR pin (refer to section 4.1). Pins 8 and 7 of PI5USB30216C are used for transmitting I2C SCL and SDA, respectively. External pull-ups may be required for SCL(OUT2) and SDA(OUT1) pins when reading/writing I2C. Alternatively, pull-ups for SCL(OUT2) and SDA(OUT1) can be enabled by short pins 1-2 and 3-4 of JP13.

### 4.3 VBUS Power Supply

The system should drive 5V to VBUS of USB-C receptacle connector (J1) when a sink/UFP is attached. If an external VBUS switch not available, a discrete VBUS switch DPS1113 is assembled on EVB, which is controlled by ID pin of PI5USB30216C. This switch will turn on and drive VBUS, when a sink/UFP is attached. To use the on-board VBUS switch, please shorts JP1.

For detailed DPS1113 function and setting, please refer to DPS1113 datasheet.

ORIGINATE DATE 16 May, 2017	EDIT DATE 16 May, 2017	DOCUMENT-REV 1.0	PAGE Page 9 of 14
--------------------------------	---------------------------	------------------	----------------------

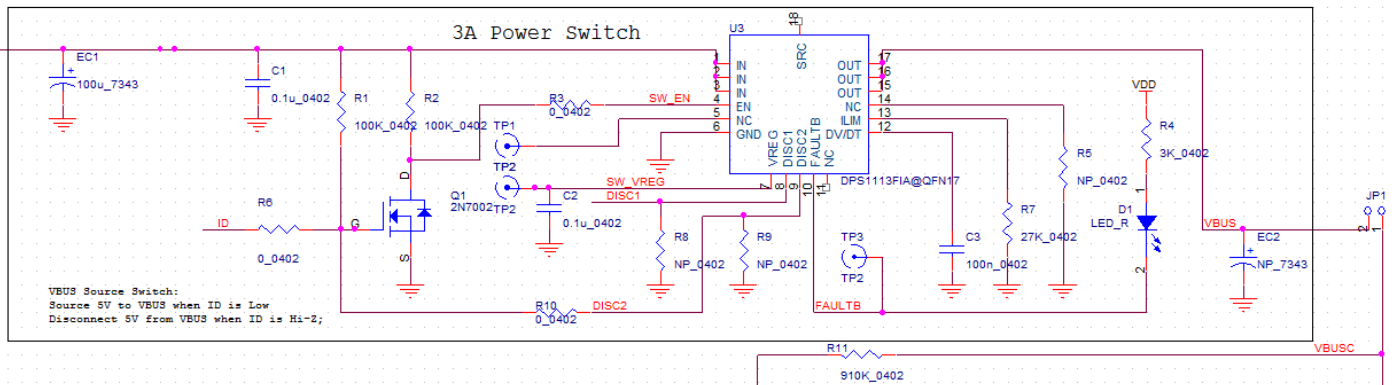


Figure 7: VBUS switch of PI5USB30216C Demo Board Rev.B

#### 4.4 Power

In DRP and battery-powered UFP mode, the demo board can be powered by +5V VBUS through mini-B connector J4 or by +5V through pin header 5VPW.

In DFP mode, the system/host can provide +5V through the USB micro-AB connector J2 to power up the board via JP3.

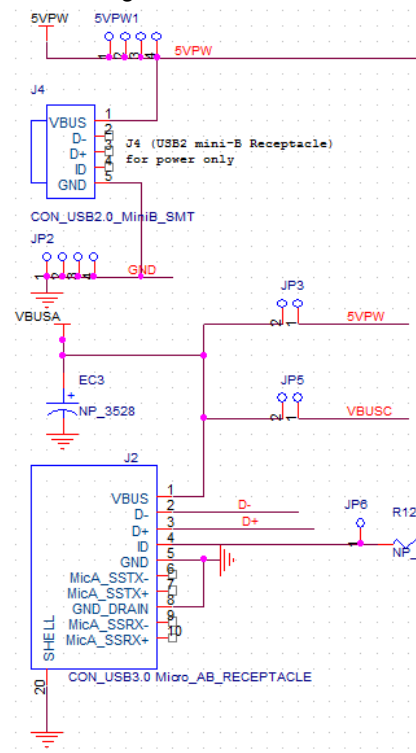


Figure 8: Power Supply option of PI5USB30216C Demo Board Rev.B

#### 4.5 Disable/Low Power State

PI5USB30216C can be disabled by setting ENB pin to a high voltage level. Please refer section 4.1.

ORIGINATE DATE 16 May, 2017	EDIT DATE 16 May, 2017	DOCUMENT-REV 1.0	PAGE Page 10 of 14
--------------------------------	---------------------------	------------------	-----------------------

---

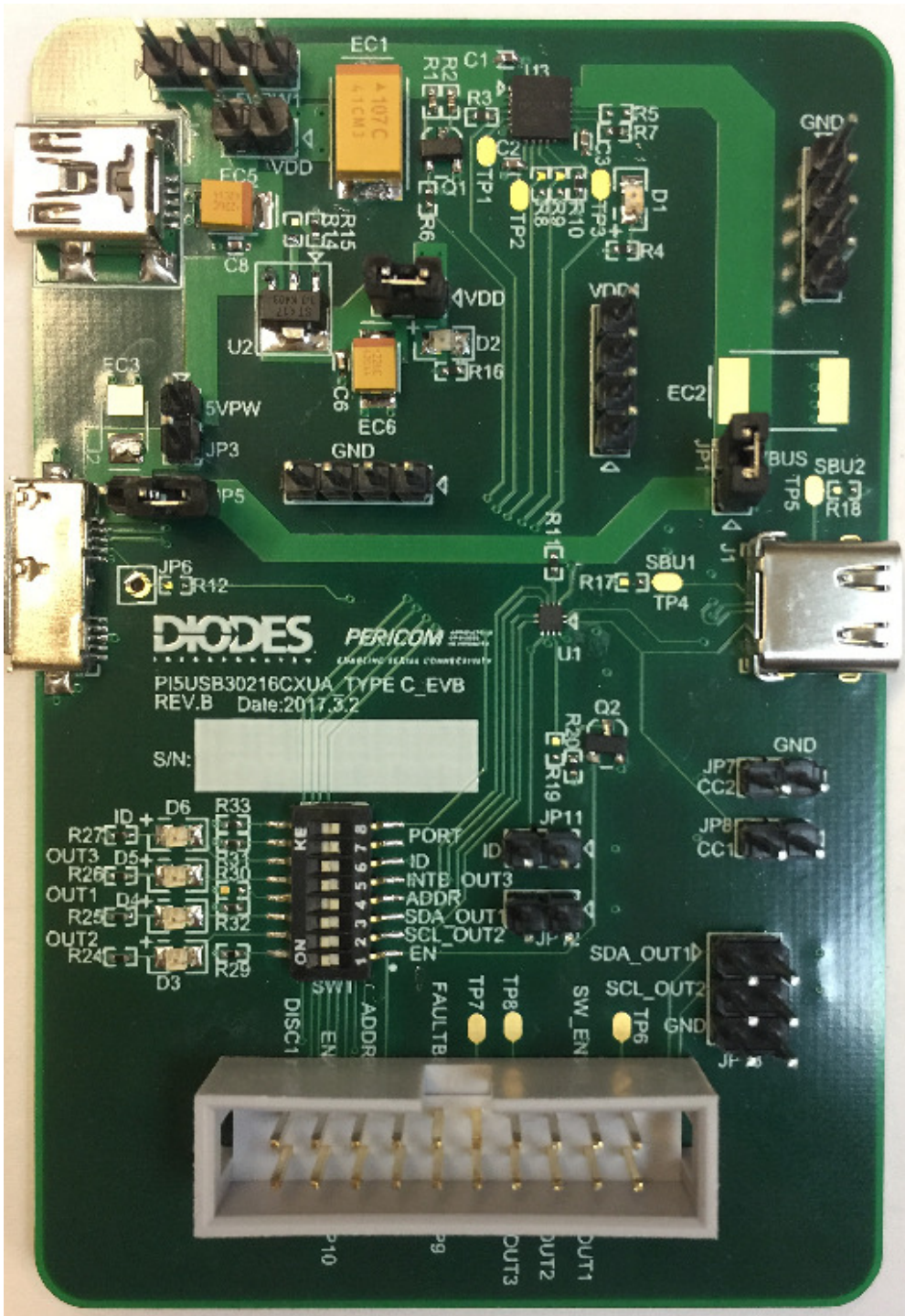
## References

- (1) Universal Serial Bus Type-C Cable and Connector Specification Version 1.1, April 3, 2015

ORIGINATE DATE 16 May, 2017	EDIT DATE 16 May, 2017	DOCUMENT-REV 1.0	PAGE Page 11 of 14
--------------------------------	---------------------------	------------------	-----------------------



6 Appendix B: Demo Board Picture



<p>ORIGINATE DATE 16 May, 2017</p>	<p>EDIT DATE 16 May, 2017</p>	<p>DOCUMENT-REV 1.0</p>	<p>PAGE Page 13 of 14</p>
--	-----------------------------------	-------------------------	-------------------------------

**Revision History**

<b>Revision</b>	<b>Date</b>	<b>Description</b>	<b>Edit by</b>	<b>Verify by</b>
1.0	16 May, 2017	Initial	Justin Lee	

ORIGINATE DATE 16 May, 2017	EDIT DATE 16 May, 2017	DOCUMENT-REV 1.0	PAGE Page 14 of 14
--------------------------------	---------------------------	------------------	-----------------------