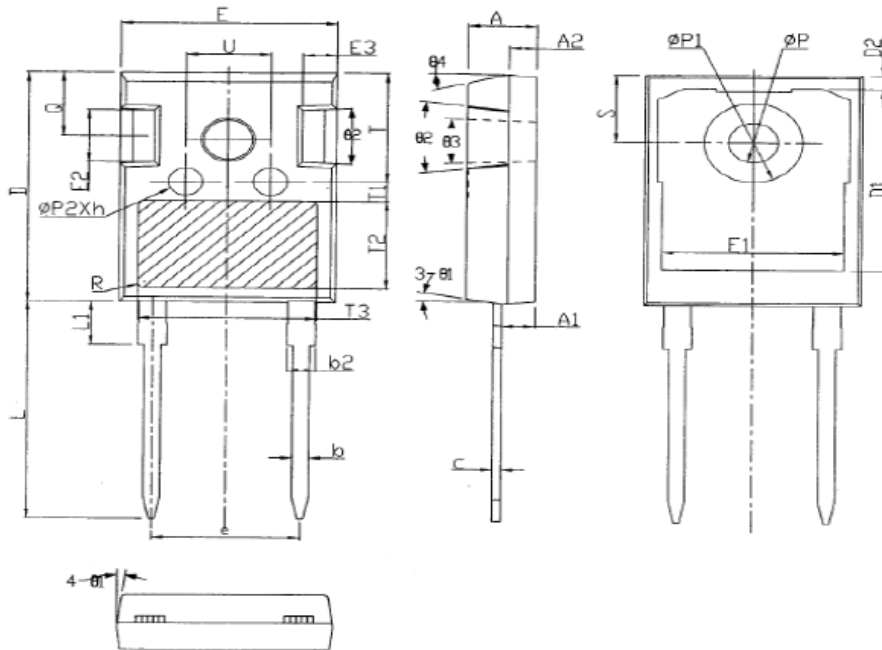


**Packaging Information**

**Mechanical Dimensions**  
**For Discrete**

**TO-247-2L**

**Unit: mm**



TO-247-2L							
DIM.	MIN.	TYP	MAX	DIM	MIN	TYP	MAX
A	4.90	5.00	5.10	ΦP	3.50	3.60	3.70
A1	2.31	2.41	2.51	ΦP1	--	--	7.30
A2	1.90	2.00	2.10	ΦP2	2.40	2.50	2.60
b	1.16	1.21	1.26	Q	5.60	5.80	6.00
b2	1.91	2.01	2.21	S	6.15BSC		
c	0.59	0.61	0.66	R	0.50REF		
D	20.90	21.0	21.10	T	9.80	--	10.20
D1	16.25	16.55	16.85	T1	1.65REF		
D2	1.05	1.20	1.35	T2	8.00REF		
E	15.70	15.80	15.90	T3	12.80REF		
E1	13.10	13.30	13.50	U	6.00	--	6.40
E2	4.90	5.00	5.10	θ1	6°	7°	8°
E3	2.40	2.50	2.60	θ2	1°	5°	6°
e	10.88BSC			θ3	1°	--	1.5°
h	0.05	0.10	0.15	θ4	14°	15°	16°
L	19.80	19.92	20.10				
L1	--	--	4.30				
All dimension in millimeter							