

Description

The AH922 is a unipolar Hall-effect one-chip switch with digital output, solution for sense magnetic field. It is designed in mixed signal CMOS and chopper technology. This IC is quite suitable for use in automotive, industrial and consumer applications. The two sensors are suited for operation over extended temperature ranges.

The AH922 Hall-effect switch is combined with a voltage regulator, Hall-voltage generator, chopper small-signal amplifier, Schmitt trigger and open-drain output.

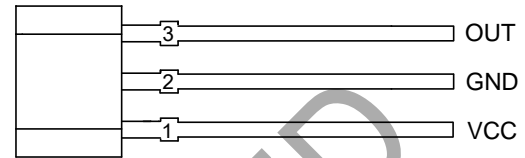
The AH922 is available in TO-92S-3 and SOT-23-3 packages.

Features

- Wide Operating Voltage Range
- Chopper Stabilization
- Extremely Low Switch Point Drift
- Superior Temperature Stability
- High Sensitivity Integrated Hall Sensor
- Solid State Reliability
- Robust EMC Capability
- **Totally Lead-Free & Fully RoHS Compliant (Notes 1 & 2)**
- **Halogen and Antimony Free. "Green" Device (Note 3)**

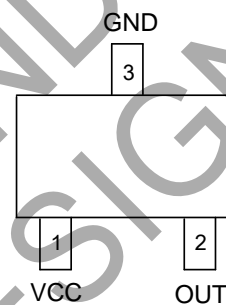
Pin Assignments

(Front View)



TO-92S-3

(Top View)



SOT-23-3

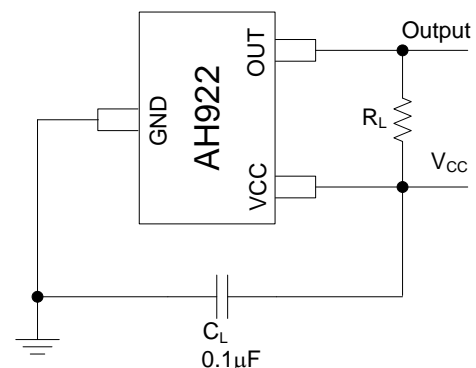
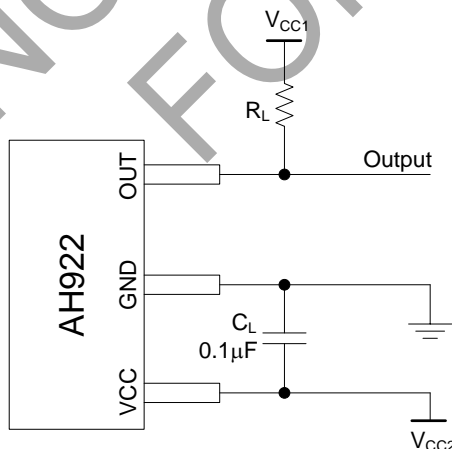
Applications

- 5V/12V DC Brushless Motor/Fan
- Solid State Switch
- Speed Detection
- Revolution Counting

Notes:

1. No purposely added lead. Fully EU Directive 2002/95/EC (RoHS) & 2011/65/EU (RoHS 2) compliant.
2. See http://www.diodes.com/quality/lead_free.html for more information about Diodes Incorporated's definitions of Halogen- and Antimony-free, "Green" and Lead-free.
3. Halogen- and Antimony-free "Green" products are defined as those which contain <900ppm bromine, <900ppm chlorine (<1500ppm total Br + Cl) and <1000ppm antimony compounds.

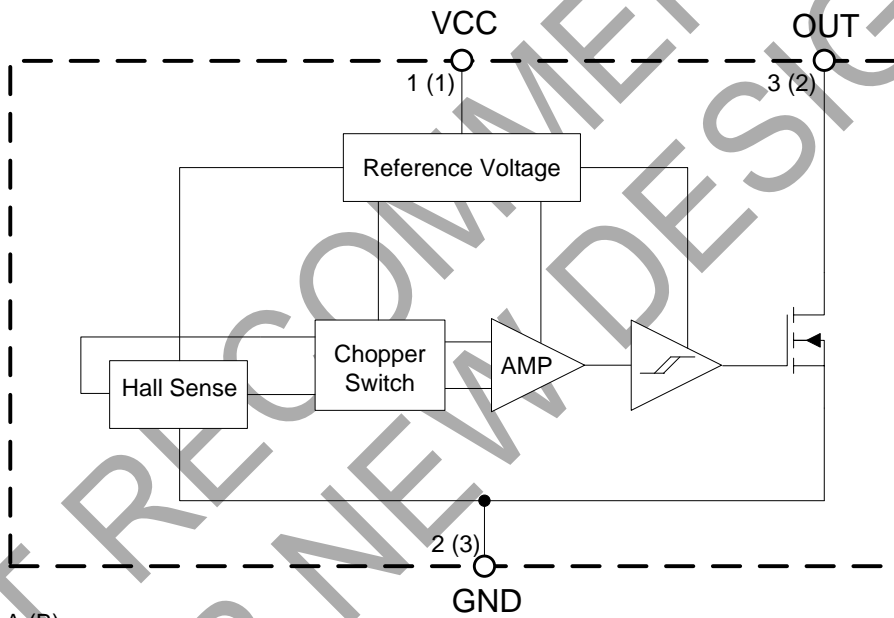
Typical Applications Circuit



Pin Descriptions

Pin Number		Pin Name	Function
TO-92S-3	SOT-23-3		
1	1	VCC	Supply voltage
2	3	GND	Ground pin
3	2	OUT	Output pin

Functional Block Diagram



A (B)
A for TO-92S-3
B for SOT-23-3

Absolute Maximum Ratings (Note 4)

Symbol	Parameter	Rating	Unit	
V _{CC}	Supply Voltage	24	V	
I _{OUT}	Output Current (Continuous)	25	mA	
P _D	Power Dissipation	TO-92S-3	400	mW
		SOT-23-3	230	
T _A	Operation Temperature	-50 to +150	°C	
T _{STG}	Storage Temperature	-65 to +150	°C	
T _J (Max)	Maximum Junction Temperature	+165	°C	
ESD	ESD (Human Body Model)	4000	V	

Note 4: Stresses greater than those listed under "Absolute Maximum Ratings" may cause permanent damage to the device. These are stress ratings only, and functional operation of the device at these or any other conditions beyond those indicated under "Recommended Operating Conditions" is not implied. Exposure to "Absolute Maximum Ratings" for extended periods may affect device reliability.

Recommended Operating Conditions

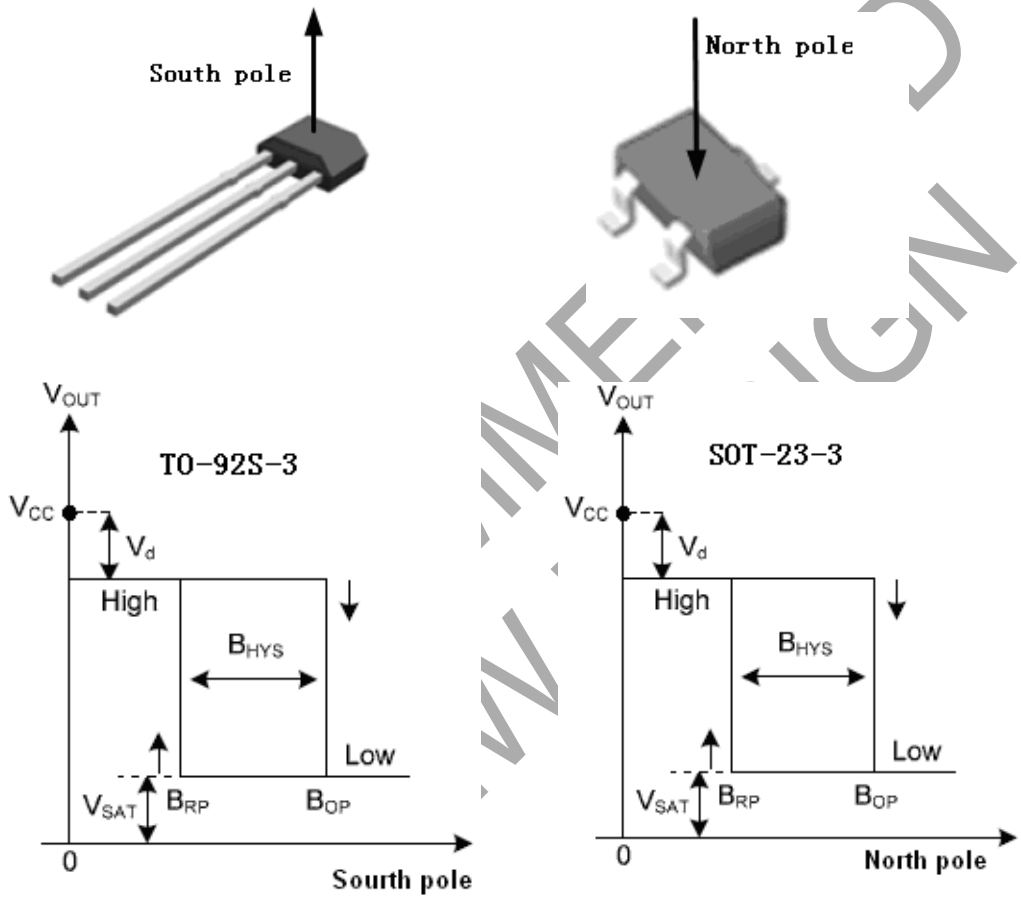
Symbol	Parameter	Min	Max	Unit
V _{CC}	Supply Voltage	3.5	22	V
T _A	Operating Ambient Temperature	-40	+125	°C

Electrical Characteristics (V_{CC}=12V, T_A=+25°C, unless otherwise specified.)

Symbol	Parameter	Conditions	Min	Typ	Max	Unit
V _{CC}	Supply Voltage	Operating	3.5	12	22	V
I _{CC}	Supply Current	V _{CC} =12V, B<B _{RP}	—	3	5	mA
		V _{CC} =12V, B>B _{OP}	—	3	5	mA
V _{SAT}	Saturation Voltage	I _{OUT} =20mA, B>B _{OP}	—	185	500	mV
I _{LEAKAGE}	Output Leakage Current	V _{OUT} =20V, B<B _{RP}	—	0.1	5	μA
t _{RISE}	Output Rising Time	R _L =1kΩ, C _L =20pF	—	0.4	2	μs
t _{FALL}	Output Falling Time	R _L =1kΩ, C _L =20pF	—	0.4	2	μs

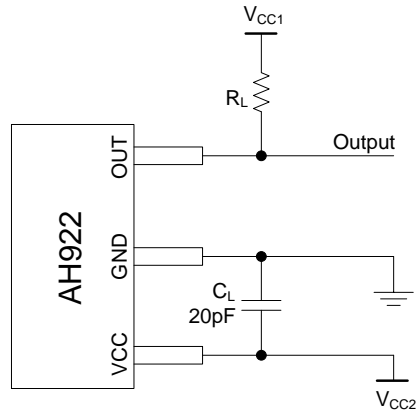
Magnetic Characteristics ($V_{CC}=12V$, $T_A=+25^{\circ}C$, unless otherwise specified.)

Symbol	Parameter	Min	Typ	Max	Unit
B _{OP}	Operating Point	80	110	140	Gauss
B _{RP}	Releasing Point	35	65	95	Gauss
B _{HYS}	Hysteresis	20	45	70	Gauss

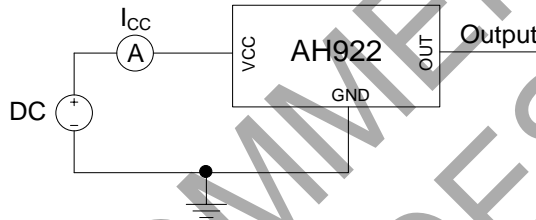


Magnetic Flux Density of AH922

Test Circuit and Test Conditions

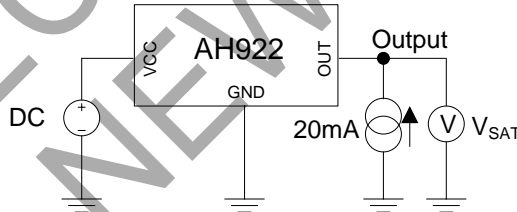


Test Circuit of AH922



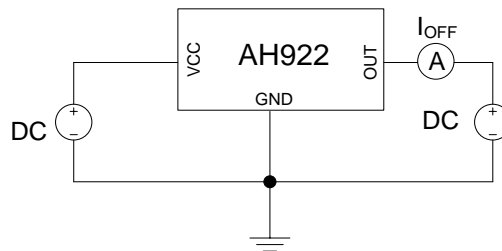
Test Conditions of AH922 (Supply Current)

- Notes:
- 5. The output is open during measurement.
 - 6. The device is put under the magnetic field: $B < B_{RP}$.



Test Conditions of AH922 (Output Saturation Voltage)

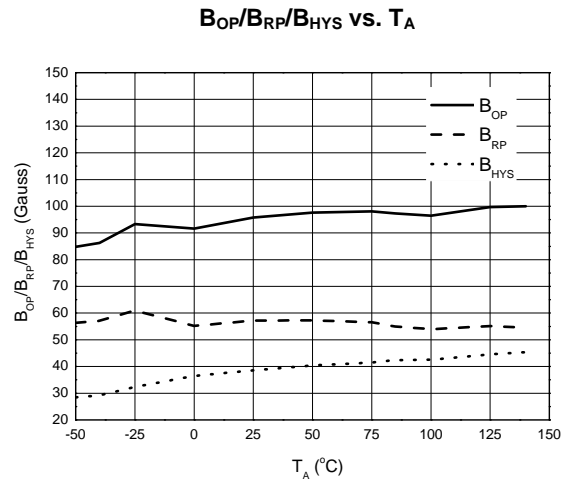
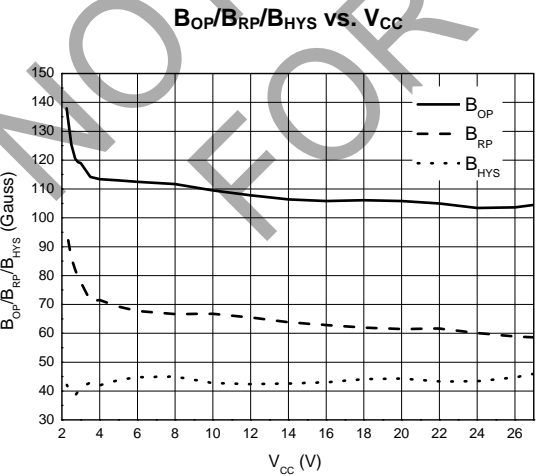
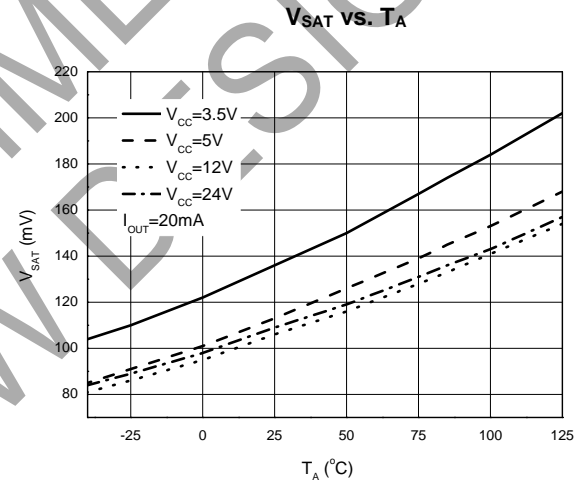
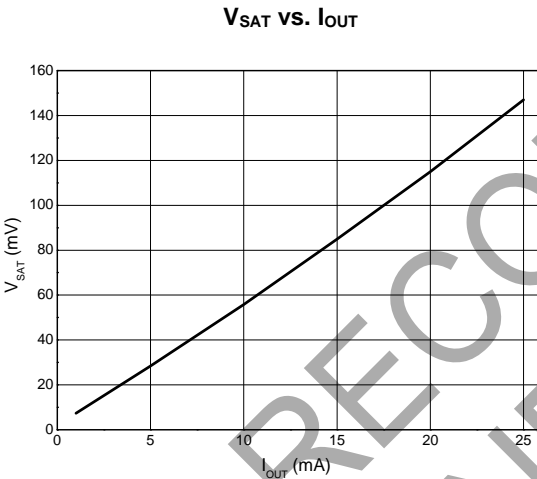
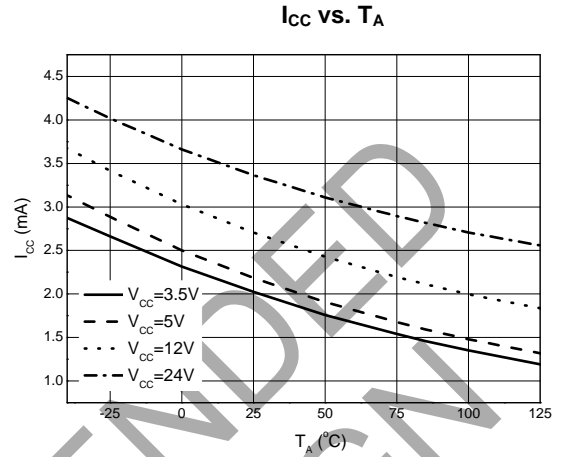
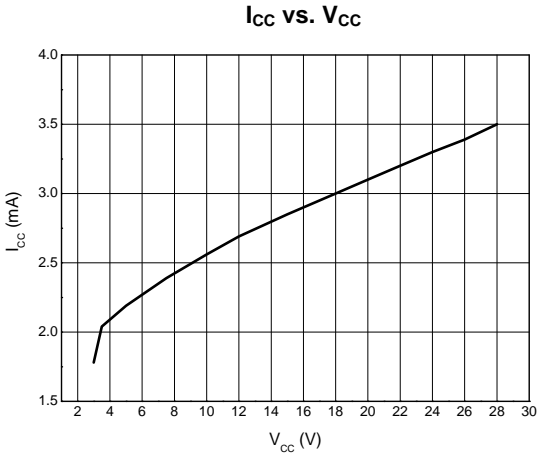
- Notes:
- 7. The output saturation voltage V_{SAT} is measured at $V_{CC}=12V$.
 - 8. The device is put under the magnetic field: $B > B_{OP}$.



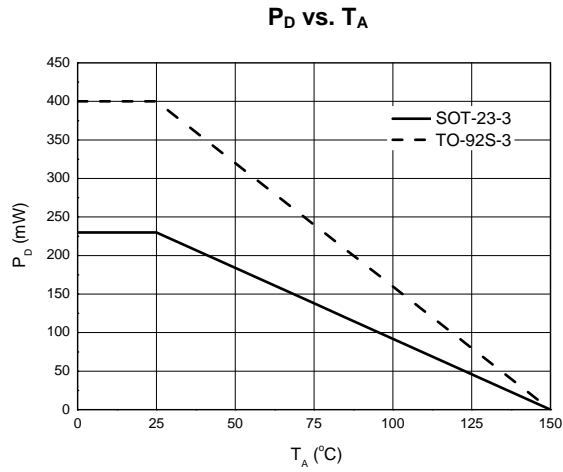
Test Conditions of AH922 (Output Leakage Current)

- Notes:
- 9. The device is put under the magnetic field: $B < B_{RP}$.
 - 10. $V_{DC}=12V$.

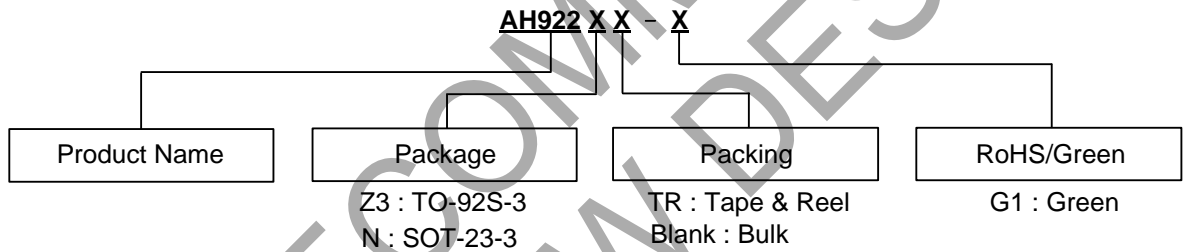
Performance Characteristics



Performance Characteristics (Cont.)



Ordering Information

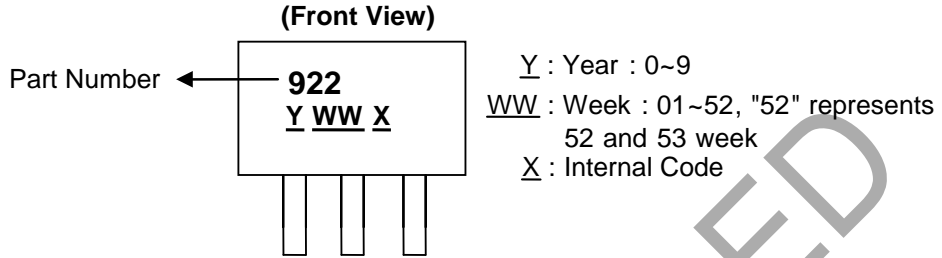


Device	Status(Note 11)	Package Code	Packaging	Bulk	7" Tape and Reel
				Quantity	Quantity
AH922Z3-G1	NRND	Z3	TO-92S-3	1000/Bulk	NA
AH922NTR-G1	NRND	N	SOT-23-3	NA	3000/Tape & Reel

Note 11: NRND = Not Recommended for New Design.

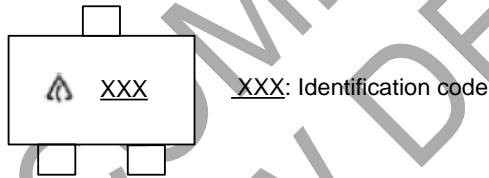
Marking Information

(1) Package Type: TO-92S-3



Part Number	Package	Identification Code
AH922	TO-92S-3	922

(2) Package Type: SOT-23-3

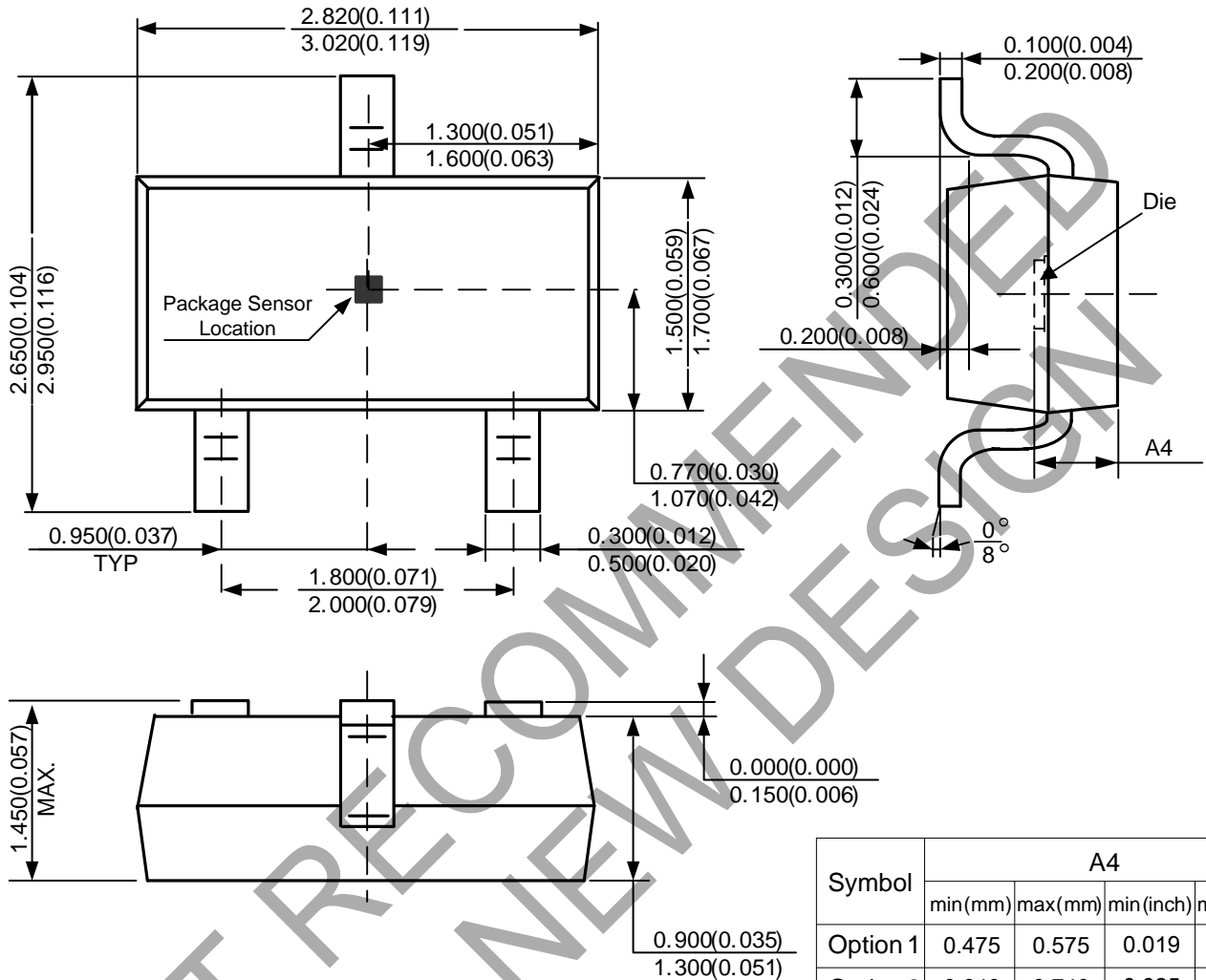


Part Number	Package	Identification Code
AH922	SOT-23-3	GT4

NOT RECOMMENDED FOR NEW DESIGN

Package Outline Dimensions (All dimensions in mm(inch).)

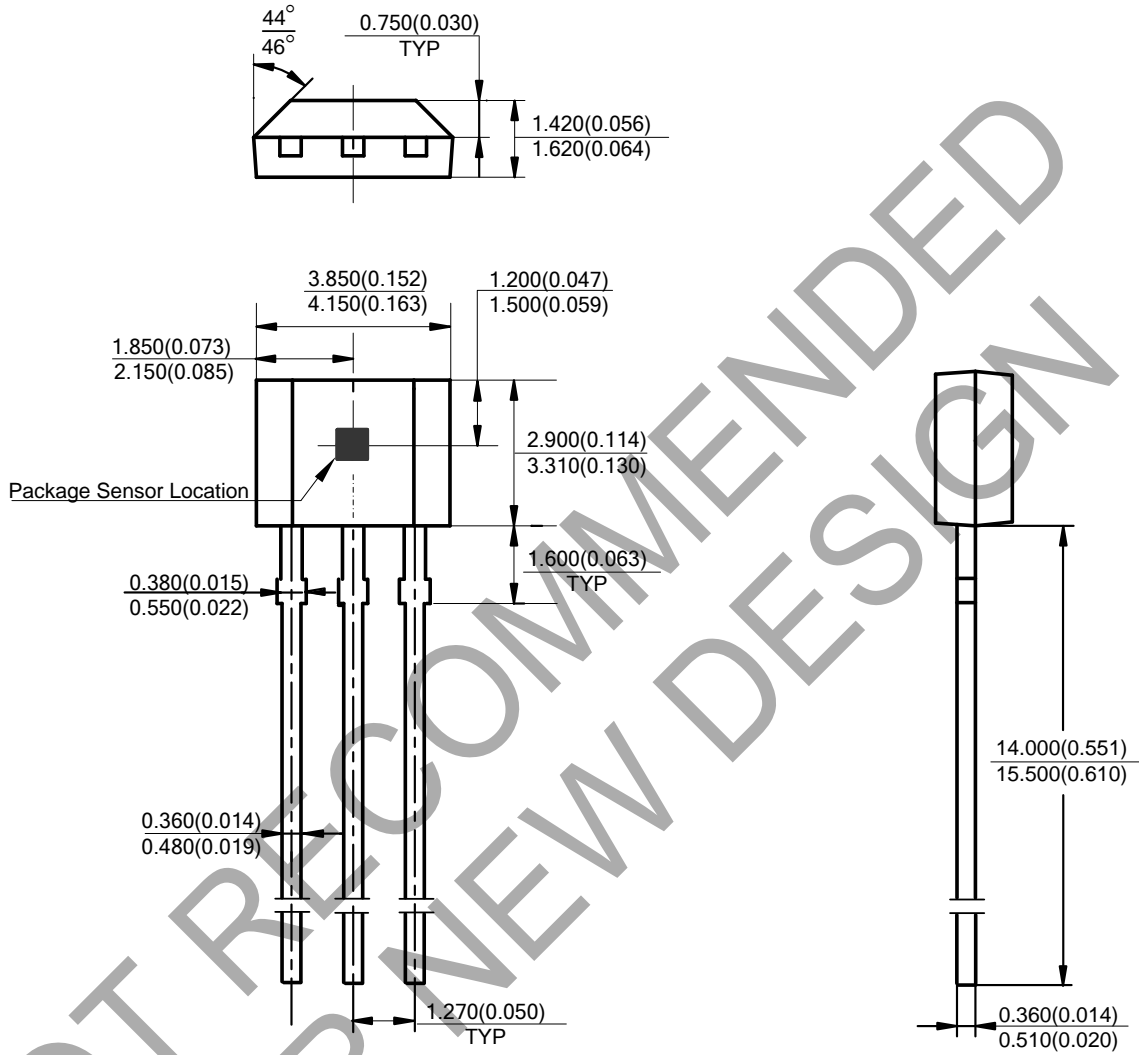
(1) Package Type: SOT-23-3



Symbol	A4			
	min(mm)	max(mm)	min(inch)	max(inch)
Option 1	0.475	0.575	0.019	0.023
Option 2	0.640	0.740	0.025	0.029

Package Outline Dimensions (All dimensions in mm(inch).) (Cont.)

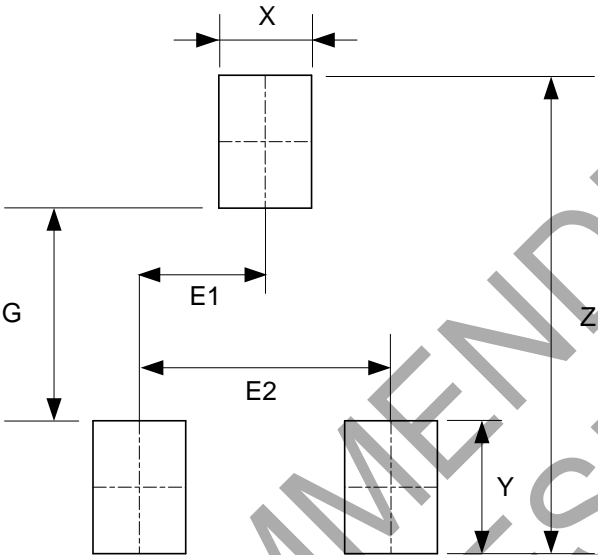
(2) Package Type: TO-92S-3



NOT RECOMMENDED FOR NEW DESIGN

Suggested Pad Layout

(1) Package Type: SOT-23-3



Dimensions	Z (mm)/(inch)	G (mm)/(inch)	X (mm)/(inch)	Y (mm)/(inch)	E1 (mm)/(inch)	E2 (mm)/(inch)
Value	3.600/0.142	1.600/0.063	0.700/0.028	1.000/0.039	0.950/0.037	1.900/0.075

NOT RECOMMENDED FOR NEW DESIGN

IMPORTANT NOTICE

DIODES INCORPORATED MAKES NO WARRANTY OF ANY KIND, EXPRESS OR IMPLIED, WITH REGARDS TO THIS DOCUMENT, INCLUDING, BUT NOT LIMITED TO, THE IMPLIED WARRANTIES OF MERCHANTABILITY AND FITNESS FOR A PARTICULAR PURPOSE (AND THEIR EQUIVALENTS UNDER THE LAWS OF ANY JURISDICTION).

Diodes Incorporated and its subsidiaries reserve the right to make modifications, enhancements, improvements, corrections or other changes without further notice to this document and any product described herein. Diodes Incorporated does not assume any liability arising out of the application or use of this document or any product described herein; neither does Diodes Incorporated convey any license under its patent or trademark rights, nor the rights of others. Any Customer or user of this document or products described herein in such applications shall assume all risks of such use and will agree to hold Diodes Incorporated and all the companies whose products are represented on Diodes Incorporated website, harmless against all damages.

Diodes Incorporated does not warrant or accept any liability whatsoever in respect of any products purchased through unauthorized sales channel. Should Customers purchase or use Diodes Incorporated products for any unintended or unauthorized application, Customers shall indemnify and hold Diodes Incorporated and its representatives harmless against all claims, damages, expenses, and attorney fees arising out of, directly or indirectly, any claim of personal injury or death associated with such unintended or unauthorized application.

Products described herein may be covered by one or more United States, international or foreign patents pending. Product names and markings noted herein may also be covered by one or more United States, international or foreign trademarks.

This document is written in English but may be translated into multiple languages for reference. Only the English version of this document is the final and determinative format released by Diodes Incorporated.

LIFE SUPPORT

Diodes Incorporated products are specifically not authorized for use as critical components in life support devices or systems without the express written approval of the Chief Executive Officer of Diodes Incorporated. As used herein:

A. Life support devices or systems are devices or systems which:

1. are intended to implant into the body, or
2. support or sustain life and whose failure to perform when properly used in accordance with instructions for use provided in the labeling can be reasonably expected to result in significant injury to the user.

B. A critical component is any component in a life support device or system whose failure to perform can be reasonably expected to cause the failure of the life support device or to affect its safety or effectiveness.

Customers represent that they have all necessary expertise in the safety and regulatory ramifications of their life support devices or systems, and acknowledge and agree that they are solely responsible for all legal, regulatory and safety-related requirements concerning their products and any use of Diodes Incorporated products in such safety-critical, life support devices or systems, notwithstanding any devices- or systems-related information or support that may be provided by Diodes Incorporated. Further, Customers must fully indemnify Diodes Incorporated and its representatives against any damages arising out of the use of Diodes Incorporated products in such safety-critical, life support devices or systems.

Copyright © 2017, Diodes Incorporated

www.diodes.com