

PI5USB216Q

Automotive Grade USB 2.0 Signal Conditioner

Description

The DIODES PI5USB216Q is an USB 2.0 Signal conditioner to boost the signals and insert pre-emphasis to compensate the ISI signal loss in the channels before and after the conditioner. Patent-pending Design to maintain stable common mode with symmetrical Boost/Pre-emphasis on D+/D-.

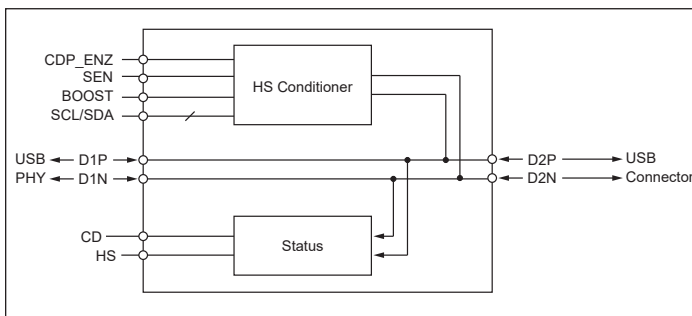
The PI5USB216Q can be used in USB Host or Device application, far from USB PHY or far from connector application. Boost/Pre-emphasis and Receiver Sensitivity levels can be configured through pin or I2C mode depending on the channel conditions. Device Attach and High-Speed handshake success are also detected and reported.

The PI5USB216Q is compatible with the USB On-The-Go (OTG) and battery charging (BC 1.2) protocols. The Integrated BC 1.2 battery charging controller can be enabled via a control pin.

Application(s)

- Automotive Infotainment and Clusters
- Automotive Head Units
- Active Cables, Cable Extenders, Backplanes

Functional Block Diagram



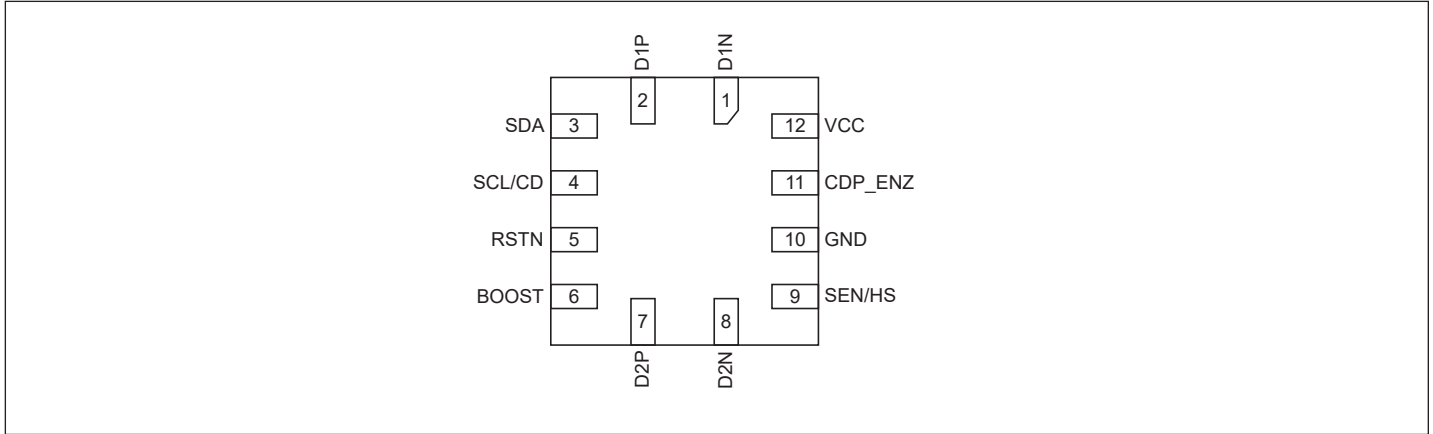
Features

- AEC-Q100 Qualified for Automotive Applications
 - Device Temperature Grade 2: -40°C to 105°C
- Wide Supply Voltage Range: 2.3V to 5.5V
- USB Ports 5.5V Tolerance
- Low Power Consumption in Disconnect and Shutdown Mode
- Compatible with USB 2.0, OTG 2.0 and BC 1.2
- Integrated BC 1.2 CDP Battery Charging Controller
- Host or Device Agnostic
- Boost/Pre-emphasis Level and Receiver Sensitivity Programming through Pin Mode or I2C Mode
- Symmetrical Boost/Pre-emphasis on D+/D- to Maintain Stable Common Mode
- Device Attach and High-Speed Detections
- Supports up to 5m Cable Length
- Supports up to 10m Cable Length with Two PI5USB216Q
- ESD Performance: 2KV HBM, 1KV CDM
- Totally Lead-Free & Fully RoHS Compliant (Notes 1 & 2)
- Halogen and Antimony Free. "Green" Device (Note 3)
- The PI5USB216Q is suitable for automotive applications requiring specific change control; this part is AEC-Q100 qualified, PPAP capable, and manufactured in IATF 16949 certified facilities.
 - <https://www.diodes.com/quality/product-definitions/>
- Packaging (Pb-free & Green):
 - 12-contact, X2QFN (XUA)

Notes:

1. No purposely added lead. Fully EU Directive 2002/95/EC (RoHS), 2011/65/EU (RoHS 2) & 2015/863/EU (RoHS 3) compliant.
2. See <https://www.diodes.com/quality/lead-free/> for more information about Diodes Incorporated's definitions of Halogen- and Antimony-free, "Green" and Lead-free.
3. Halogen- and Antimony-free "Green" products are defined as those which contain <900ppm bromine, <900ppm chlorine (<1500ppm total Br + Cl) and <1000ppm antimony compounds.
4. Automotive products are AEC-Q100 qualified and are PPAP capable. Refer to <https://www.diodes.com/quality/>.

Pin Configuration



Pin Description

Pin#	Pin Name	Type	Description
1, 2	D1N, D1P	I/O	USB High speed port
3	SDA	I/O	500kΩ internal pulled high and 1.8MΩ internal pulled down. <u>In I2C mode:</u> Bidirectional I2C data pin; Connected to a pull-up resistor During power up, pulled up SDA and SCL/CD with Rpu (<10kΩ) to enter I2C mode OR floating to enter Pin mode <u>In Pin mode:</u> Do not connect
4	SCL/CD	I/O	<u>In I2C mode:</u> I2C Clock pin During power up, pulled up SDA and SCL/CD with Rpu (<10kΩ) to enter I2C mode OR floating to enter Pin mode (500kΩ pull-down during RSTN rising) <u>In Pin mode:</u> Output CD, Flag indicating that a USB device is attached. Asserted from an unconnected state upon detection of DP or DM pull up resistor. De-asserted upon detection of disconnect.
5	RSTN	I	Device disable/enable. Low – Device is at RESET and in shutdown, and High – Normal operation. 500kΩ internal pulled high and 1.8MΩ internal pulled down. Recommend 0.1-uF external capacitor to GND to ensure clean power on reset if not driven. If the pin is driven, it must be held low until the supply voltage for the device reaches within specifications.
6	BOOST	I	USB High Speed Boost selection. Select via external pull down resistor. Sampled upon de-assertion of RSTN. Does not recognize real time adjustments.
7, 8	D2P, D2N	I/O	USB High speed port

PI5USB216Q

Pin#	Pin Name	Type	Description
9	SEN/HS	I/O	<p><u>In I2C mode:</u> No function</p> <p><u>In Pin mode:</u> At reset: 3-level input signal SEN. Receiver Sensitivity selection. High Sensitivity (pin is pulled high) Medium Sensitivity (pin is left floating) Low Sensitivity (pin is pulled low)</p> <p>After Reset: Output signal HS. Flag indicating that channel is in High Speed mode.</p> <p>Asserted upon: 1. Detection of USB-IF High Speed test fixture from an unconnected state followed by transmission of USB TEST_PACKET pattern. 2. Detection of High Speed a successful High Speed handshake</p>
10	GND	Power	Ground
11	CDP_ENZ	I	Set CDP_ENZ is low to enable BC 1.2 CDP controller. Internal pullup 500kΩ
12	VCC	Power	Supply Power

Maximum Ratings

(Above which useful life may be impaired. For user guidelines, not tested.)

Storage Temperature	-55°C to +125°C
Supply Voltage	-0.5V to +6.0V
USB IO Voltage	-0.5V to +6.0V
Control Input Voltage.....	-0.5V to +6.0V
Output Current	10mA
ESD: HBM Mode	2000V

Note:

Stresses greater than those listed under MAXIMUM RATINGS may cause permanent damage to the device. This is a stress rating only and functional operation of the device at these or any other conditions above those indicated in the operational sections of this specification is not implied. Exposure to absolute maximum rating conditions for extended periods may affect reliability.

Recommended Operating Conditions

Symbol	Description	Test Conditions	Min.	Typ.	Max.	Units
V _{CC}	Supply Voltage		2.3		5.5	V
T _A	Ambient Temperature		-40		105	°C

DC Electrical Characteristics

Symbol	Description	Test Conditions	Min.	Typ.	Max.	Units
Power						
I _{ACTIVE}	High-speed (HS) active current	USB channel in HS mode with traffic		22	30	mA
I _{IDLE}	High-speed idle current	USB channel in HS mode without traffic		14	22	mA
I _{SUSPE}	High-speed suspend current	USB channel in HS Suspend mode		0.55	1.5	mA
I _{FS_LS}	Full/Low speed current	USB channel in FS/LS mode		0.6	1.5	mA
I _{DISC}	Disconnect current	No USB attachment		0.7	1.5	mA
I _{RSTN}	Disable current	RSTB = 0V		13	80	µA
I _{LKG_FS}	Pin fail-safe leakage current for SDA, SCL/CD, DxP/N, RSTN, SEN/HS, CDP_ENZ	VCC = 0V, Tested Pin = 5.5V			40	µA
RSTN						
V _{IH}	High-level input voltage		1.05		5.5	V
V _{IL}	Low-level input voltage		0		0.4	V
I _{IH}	High-level input current	VRSTN = VCC	-15		15	µA
I _{IL}	Low-level input current	VRSTN = 0V	-20		20	µA
SEN						
V _{IH}	High-level input voltage		1.6			V
V _{IF}	Floating-level input voltage		1.0		1.5	V
V _{IL}	Low-level input voltage				0.8	V
I _{IH}	High-level input current	VSEN = VCC	-5		5	uA

PI5USB216Q

Symbol	Description	Test Conditions	Min.	Typ.	Max.	Units
I _{IL}	Low-level input current	VSEN = 0V	-5		5	uA
CDP_ENZ						
V _{IH}	High-level input voltage		1.05		5.5	V
V _{IL}	Low-level input voltage		0		0.4	V
I _{IH}	High-level input current	VCDP_ENZ = VCC	-5		5	uA
I _{IL}	Low-level input current	VCDP_ENZ = GND	-20		20	uA
BOOST						
R _{BOOST}	Setting 0				160	Ω
	Setting 1		1.5		2	kΩ
	Setting 2		3.4		3.96	kΩ
	Setting 3		7.5			kΩ
CD, HS						
V _{OH}	High-level output voltage	I _{out} = 50uA, VCC > 3.0V	2.5			V
		I _{out} = 25uA, VCC = 2.3V	1.8			
V _{OL}	Low-level output voltage	I _{out} = 50uA			0.4	V
SCL, SDA						
C _{I2CBUS}	I2C Bus capacitance		4		150	pF
V _{IH}	SDA and SCL input high level voltage		1.05		5.5	V
V _{IL}	SDA and SCL input low level voltage		0		0.3	V
I _{SDAO}	SDA low level output current	SDA = 0.4V	1.5			mA
f _{SCL}	SCL clock frequency				1000	KHz
DxP, DxM						
C _{IO}	Capacitance to GND	240MHz, Device off		2.4		pF

Switching Characteristics

Symbol	Description	Test Conditions	Min.	Typ.	Max.	Units
F _{BR}	DxP/M bit rate				480.24	Mbps
t _{RISE}	DxP/M rise time	10% - 90%; VCC = 5.5V; Max BOOST	100			ps
t _{FALL}	DxP/M fall time	90% - 10%; VCC = 5.5V; Max BOOST	100			ps
t _{RSTN_PW}	Minimum width to detect a valid RSTN signal assert when the pin is actively driven		20			μs
t _{STABLE}	VCC stable before RSTN de-assertion		100			μs
t _{VCC_RAMP}	VCC ramp time		0.2		100	ms

Detail Description

Overview

The PI5USB216Q is an USB2.0 High-Speed (HS) Signal conditioner to boost the signals and insert pre-emphasis to compensate the ISI signal loss in the channels before and after. PI5USB216Q will not alter the signals of USB Low Speed (LS), Full Speed (FS), On-The-Go (OTG) and Battery Charging (BC), while HS signals are compensated. Boost/Pre-emphasis level and Receiver Sensitivity can be programmed by I2C or pin mode.

BOOST/PRE-EMPHASIS

The BOOST pin of PI5USB216Q is used to configure the level of BOOST/PRE-EMPHASIS in pin mode and initialize the corresponding register in I2C mode. Amplitude boost compensates the amplitude loss due to the long channel before PI5USB216Q, and pre-emphasis compensates the high frequency loss due to the low-pass long channel after PI5USB216Q. The four settings can be selected by an external pulldown resistor at this pin and it will be sampled a short moment after RSTN rising.

BOOST Pin Connection	Register Default Value	Boost/Pre-Emphasis Level
Setting 0 (<160 Ω)	0000	Lowest
Setting 1 (~1.8 kΩ)	0101	Lower Mid
Setting 2 (~3.6 kΩ)	1010	Higher Mid
Setting 3 (>7.5 kΩ)	1111	Highest

Receiver Sensitivity

The SEN pin of PI5USB216Q is used to configure the level of Receiver Sensitivity in pin mode and initialize the corresponding register in I2C mode. The three settings can be selected by connecting the pin to VCC/Floating/GND during RSTN and it will be sampled a short moment after RSTN rising. After RSTN, the pin will function as an output for HS detection.

SEN Pin Connection	Register Default Value	Receiver Sensitivity Level
VCC	11	Highest
Floating	10	Higher Mid
GND	01	Lower Mid

BC 1.2 Charging Controller

The PI5USB216Q can serve USB BC 1.2 host charging controller functionality if the host itself does not provide. When CDP_ENZ is low, the PI5USB216Q supports CDP charging downstream port functionality. CDP_ENZ has an internal 500k pull up resistor when the pin is left open, CDP controller will be disable.

Pin 11 (CDP_ENZ)	CDP
High	Disable
Low	Enable

I2C Mode

PI5USB216Q supports 1MHz up-to-1.2V I2C for device configuration and status readback. This controller is enabled after SCL and SDA pins are sampled high shortly after de-assertion of RSTN. Otherwise, pin mode is enabled. In I2C mode, the registers can be accessed by I2C read/write transaction to 7-bit slave address 0x2C.

Address	Register	Type	Reset Value	Bit 7	Bit 6	Bit 5	Bit 4	Bit 3	Bit 2	Bit 1	Bit 0	
00h	Reserved	RW	00000000b	Reserved								
01h	Control	RW	0000xxxxb	Receiver Equalization Level	Boost/Pre-emphasis Level				Receiver Sensitivity Level			
				00 (Lowest) 01 10 11 (Highest)	Coarse 00 (Lowest) 01 10 11 (Highest)		Fine 00 (Lowest) 01 10 11 (Highest)		00 (Lowest) 01 10 11 (Highest)			
				Default value set by BOOST pin sampling during startup							Default value set by SEN pin sampling during startup	
02h	Device ID	R	10110000b	Device ID: 10110						Revision: 000		

Device Functional Modes

Low Speed (LS) Mode/Full Speed (FS) Mode

PI5USB216Q automatically detects a LS/FS connection and does not enable signal compensation. In pin mode, CD pin is asserted high.

High Speed (HS) Mode

PI5USB216Q automatically detects a HS connection and will enable signal compensation. In pin mode, CD and HS pins are asserted high.

OTG Mode/B.C.1.2 Mode

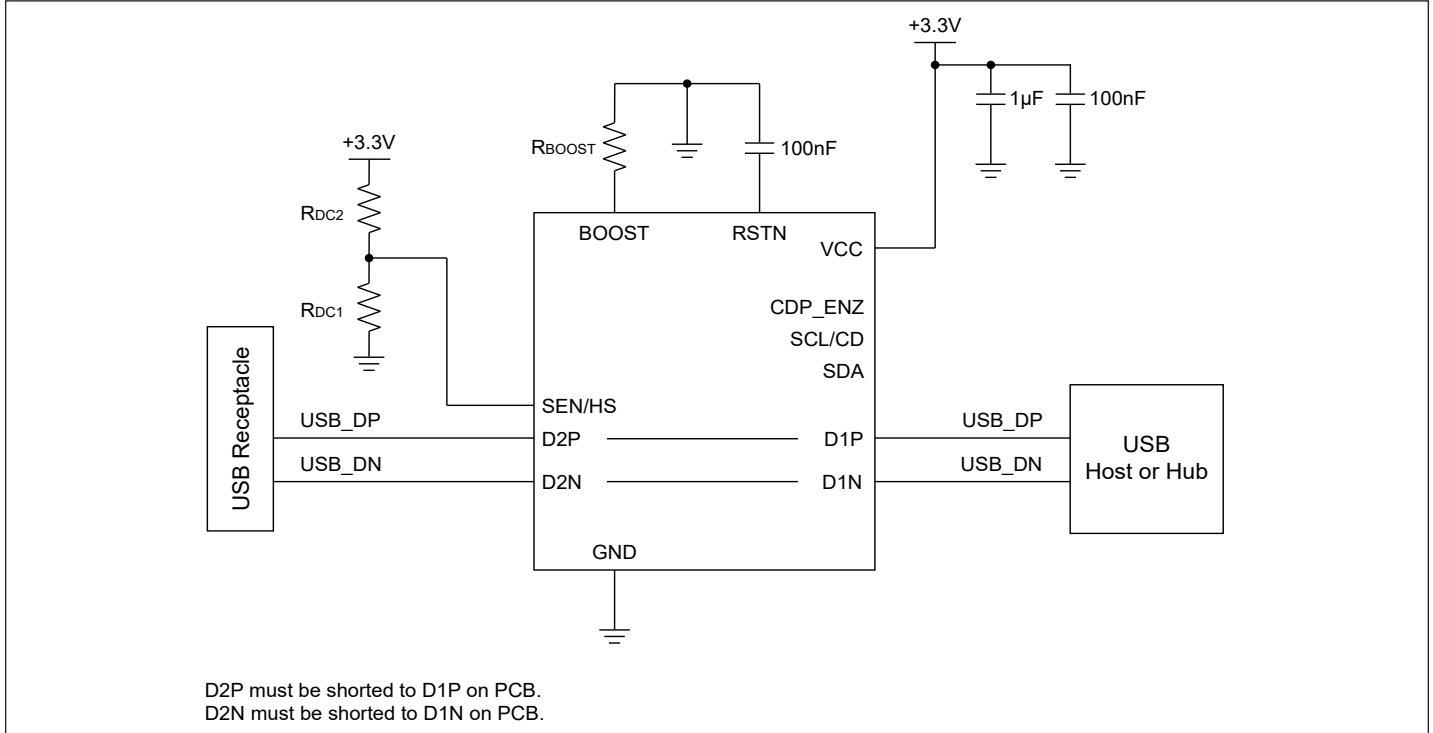
PI5USB216Q does not enable signal compensation for OTG or B.C.1.2 signals. In pin mode, CD pin is asserted low.

Shutdown Mode

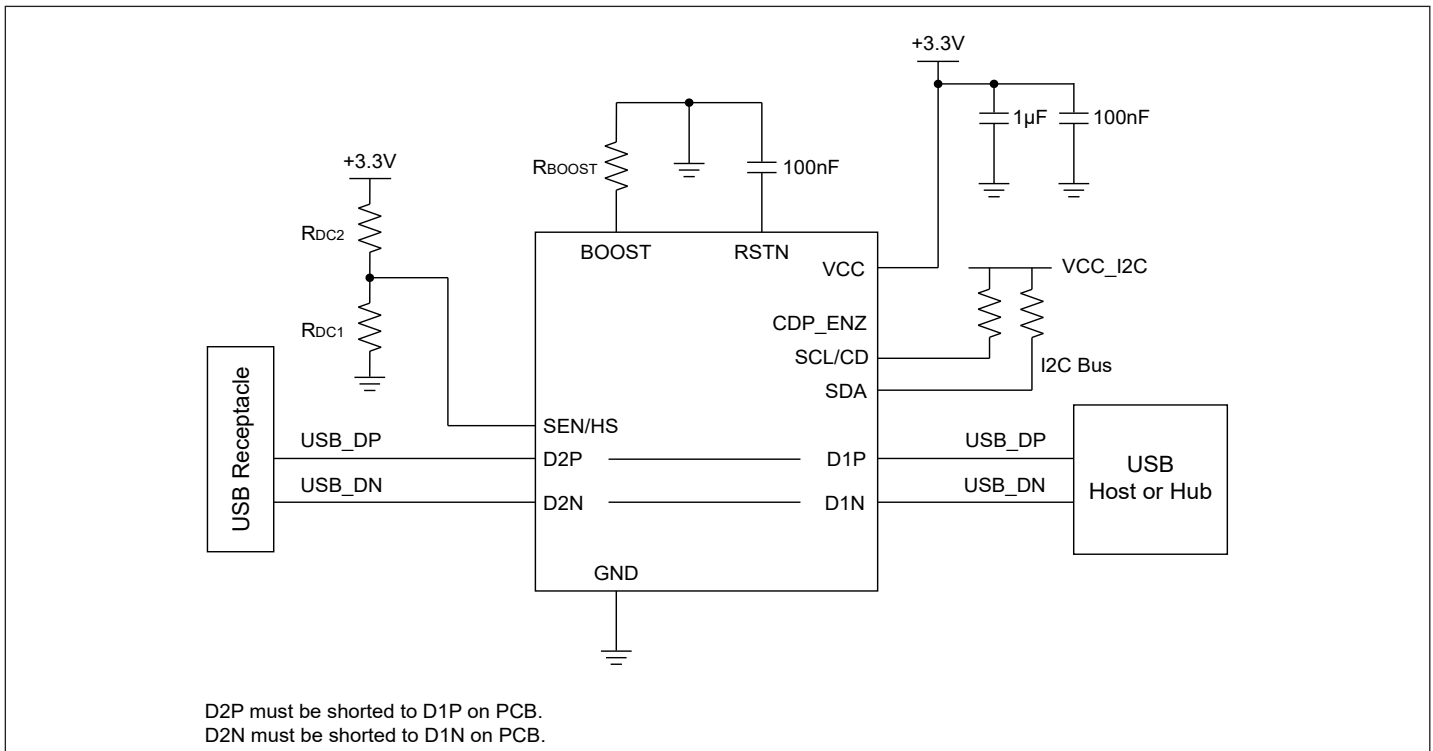
PI5USB216Q is disabled when its RSTN pin is asserted low. In shutdown mode the USB channel is still fully operational, but there is neither signal compensation nor any indication from the CD or HS pin as to the status of the channel.

Application Diagram

Pin Mode



I2C Mode



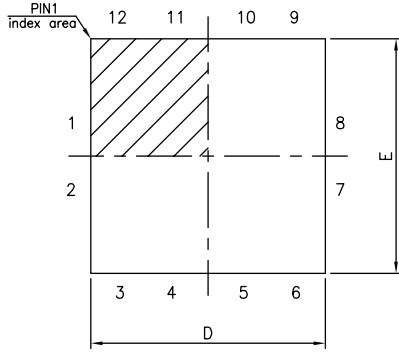
PI5USB216Q

Part Marking

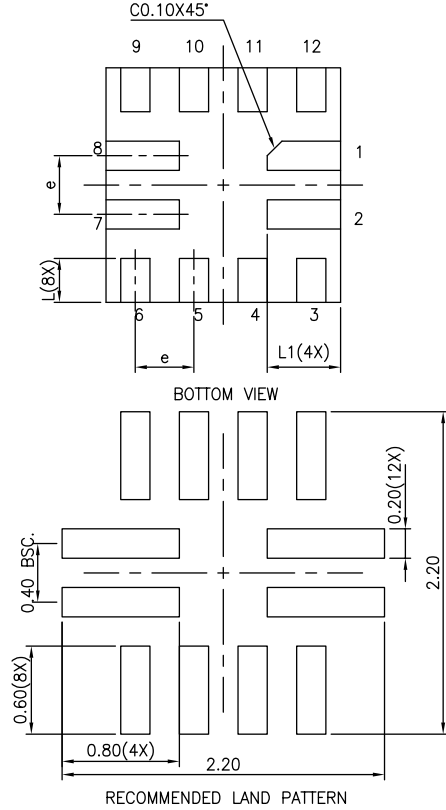
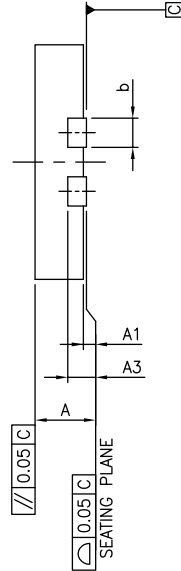
Top mark not available at this time. To obtain advance information regarding the top mark, please contact your local sales representative.

Packaging Mechanical

12-X2QFN (XUA)



SYMBOLS	MIN.	NOM.	MAX.
A	0.30	0.35	0.40
A1	0.00	0.02	0.05
A3	0.127 REF.		
b	0.15	0.20	0.25
D	1.55	1.60	1.65
E	1.55	1.60	1.65
e	0.40 BSC		
L	0.25	0.30	0.35
L1	0.45	0.50	0.55



NOTE :

1. ALL DIMENSIONS ARE IN mm. ANGLES IN DEGREES.
2. REFER JEDEC MO-288
3. RECOMMENDED LAND PATTERN IS FOR REFERENCE ONLY.

DESCRIPTION: X2-QFN1616-12

PACKAGE CODE: XUA (XUA12)

DOCUMENT CONTROL #: PD-2167

REVISION: B

For latest package info.

please check: <http://www.diodes.com/design/support/packaging/pericom-packaging/packaging-mechanicals-and-thermal-characteristics/>

Ordering Information

Ordering Code	Package Code	Package Description
PI5USB216Q2XUAEX	XUA	X2-QFN1616-12

Notes:

1. No purposely added lead. Fully EU Directive 2002/95/EC (RoHS), 2011/65/EU (RoHS 2) & 2015/863/EU (RoHS 3) compliant.
2. See <https://www.diodes.com/quality/lead-free/> for more information about Diodes Incorporated's definitions of Halogen- and Antimony-free, "Green" and Lead-free.
3. Halogen- and Antimony-free "Green" products are defined as those which contain <900ppm bromine, <900ppm chlorine (<1500ppm total Br + Cl) and <1000ppm antimony compounds.
4. Q = Automotive Compliant
5. 2 = AEC-Q100 Grade Level
6. E = Pb-free and Green
7. X suffix = Tape/Reel

IMPORTANT NOTICE

1. DIODES INCORPORATED (Diodes) AND ITS SUBSIDIARIES MAKE NO WARRANTY OF ANY KIND, EXPRESS OR IMPLIED, WITH REGARDS TO ANY INFORMATION CONTAINED IN THIS DOCUMENT, INCLUDING, BUT NOT LIMITED TO, THE IMPLIED WARRANTIES OF MERCHANTABILITY, FITNESS FOR A PARTICULAR PURPOSE OR NON-INFRINGEMENT OF THIRD PARTY INTELLECTUAL PROPERTY RIGHTS (AND THEIR EQUIVALENTS UNDER THE LAWS OF ANY JURISDICTION).

2. The Information contained herein is for informational purpose only and is provided only to illustrate the operation of Diodes' products described herein and application examples. Diodes does not assume any liability arising out of the application or use of this document or any product described herein. This document is intended for skilled and technically trained engineering customers and users who design with Diodes' products. Diodes' products may be used to facilitate safety-related applications; however, in all instances customers and users are responsible for (a) selecting the appropriate Diodes products for their applications, (b) evaluating the suitability of Diodes' products for their intended applications, (c) ensuring their applications, which incorporate Diodes' products, comply the applicable legal and regulatory requirements as well as safety and functional-safety related standards, and (d) ensuring they design with appropriate safeguards (including testing, validation, quality control techniques, redundancy, malfunction prevention, and appropriate treatment for aging degradation) to minimize the risks associated with their applications.

3. Diodes assumes no liability for any application-related information, support, assistance or feedback that may be provided by Diodes from time to time. Any customer or user of this document or products described herein will assume all risks and liabilities associated with such use, and will hold Diodes and all companies whose products are represented herein or on Diodes' websites, harmless against all damages and liabilities.

4. Products described herein may be covered by one or more United States, international or foreign patents and pending patent applications. Product names and markings noted herein may also be covered by one or more United States, international or foreign trademarks and trademark applications. Diodes does not convey any license under any of its intellectual property rights or the rights of any third parties (including third parties whose products and services may be described in this document or on Diodes' website) under this document.

5. Diodes' products are provided subject to Diodes' Standard Terms and Conditions of Sale (<https://www.diodes.com/about/company/terms-and-conditions/terms-and-conditions-of-sales/>) or other applicable terms. This document does not alter or expand the applicable warranties provided by Diodes. Diodes does not warrant or accept any liability whatsoever in respect of any products purchased through unauthorized sales channel.

6. Diodes' products and technology may not be used for or incorporated into any products or systems whose manufacture, use or sale is prohibited under any applicable laws and regulations. Should customers or users use Diodes' products in contravention of any applicable laws or regulations, or for any unintended or unauthorized application, customers and users will (a) be solely responsible for any damages, losses or penalties arising in connection therewith or as a result thereof, and (b) indemnify and hold Diodes and its representatives and agents harmless against any and all claims, damages, expenses, and attorney fees arising out of, directly or indirectly, any claim relating to any noncompliance with the applicable laws and regulations, as well as any unintended or unauthorized application.

7. While efforts have been made to ensure the information contained in this document is accurate, complete and current, it may contain technical inaccuracies, omissions and typographical errors. Diodes does not warrant that information contained in this document is error-free and Diodes is under no obligation to update or otherwise correct this information. Notwithstanding the foregoing, Diodes reserves the right to make modifications, enhancements, improvements, corrections or other changes without further notice to this document and any product described herein. This document is written in English but may be translated into multiple languages for reference. Only the English version of this document is the final and determinative format released by Diodes.

8. Any unauthorized copying, modification, distribution, transmission, display or other use of this document (or any portion hereof) is prohibited. Diodes assumes no responsibility for any losses incurred by the customers or users or any third parties arising from any such unauthorized use.

9. This Notice may be periodically updated with the most recent version available at <https://www.diodes.com/about/company/terms-and-conditions/important-notice>

The Diodes logo is a registered trademark of Diodes Incorporated in the United States and other countries.

All other trademarks are the property of their respective owners.

© 2024 Diodes Incorporated. All Rights Reserved.

www.diodes.com